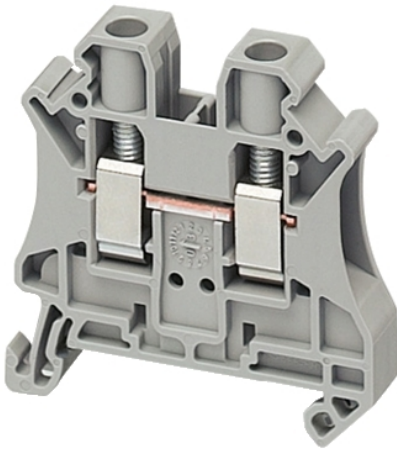


NSYTRV62

SCREW TERMINAL, FEED THROUGH, 2 POINTS, 6MM² , GREY



Main

Range	Lineryg
Product name	Lineryg TR
Product or component type	Terminal block
Device short name	TRV
Accessory / separate part category	Connection accessory
Terminal block type	Passthrough
Terminal block level	1
Mounting mode	Clip-on
Nominal cross section	6 mm ²
Length	47,7 mm
Colour	Grey
Quantity per set	Set of 50

Complementary

Width	8,2 mm
Height	47,5 mm
Connections - terminals	1 x screw terminal upstream M4) 1 x screw terminal downstream M4)
Number of connections	2
Connection position	Sideways
Number of measurement input	2
Cable cross section	0,2...10 Mm ² , solid with cable end 0,2...6 Mm ² , flexible with cable end 0,2...10 Mm ² , solid without cable end 0,2...10 mm ² , flexible without cable end
Tightening torque	1,5...1,8 N.m
Wire stripping length	10 mm
Tool type	Connection screwdriver Disconnection screwdriver
[Ue] rated operational voltage	1000 V EN/IEC 60947-7-1 600 V CSA 690 V ATEX Exe II Ex II 2 GD 600 V cURus
[In] rated current	41 A EN/IEC 60947-7-1 50 A cURus 50 A CSA 40 A ATEX Exe II Ex II 2 GD
Material	Polyamide 6/6 insulating case Copper alloy connector and screw Copper alloy commoning link Chromium-nickel steel spring
Dielectric loss	0,01 at 1 MHz IEC 60250 0,01 at 1 MHz VDE 0303-T4
Dielectric constant	3,7 at 1 MHz
Resistivity	10000 MΩ.M IEC 60093 10000 MΩ.m VDE 0303-T30
Surface resistance	1000 GΩ IEC 60093 1000 GΩ VDE 0303-T30
Creep resistance	500 CTI (> 400 kV) IEC 60093 500 CTI (> 400 kV) VDE 0303-T30

The information provided in this documentation contains general descriptions and/or technical characteristics of the performance of the products contained herein. This documentation is not intended as a substitute for and is not to be used for determining suitability or reliability of these products for specific user applications. It is the duty of any such user or integrator to perform the appropriate and complete risk analysis, evaluation and testing of the products with respect to the relevant specific application or use thereof. Neither Schneider Electric Industries SAS nor any of its affiliates or subsidiaries shall be responsible or liable for misuse of the information contained herein.

Flame retardance	V0 0,8 mm UL 94
Net weight	13,95 g
Range compatibility	Prisma G Prisma P Prisma PH Prisma Pack Spacial Kaedra Pragma TeSys
Product compatibility	Spacial enclosures

Environment

Product certifications	ATEX LR VDE GL DNV CSA CURus EAC IEC-Ex
Dielectric strength	1000 V IEC 60243-1
Ambient air temperature for operation	-40...130 °C IEC 60216-1 -40...130 °C VDE 0304-T21

Pakke osad

Pakendi tüüp 1	Db
Ühikute arv pakendis 1	1
Package 1 Height	0,800 cm
Pakendi laius 1	4,700 cm
Pakendi pikkus 1	4,800 cm
Pakendi kaal 1	14,000 g
Pakendi tüüp 2	Gyári csomagolás
Ühikute arv pakendis 2	50
Pakendi kõrgus 2	5,200 cm
Pakendi laius 2	10,500 cm
Pakendi pikkus 2	21,500 cm
Pakendi kaal 2	730,000 g
Pakendi tüüp 3	P06
Ühikute arv pakendis 3	7000
Pakendi kõrgus 3	75,000 cm
Pakendi laius 3	60,000 cm
Pakendi pikkus 3	80,000 cm
Pakendi kaal 3	115,200 kg

Offer Sustainability

Jätkusuutliku pakkumise olek	Green Premium toode
REACH-määrus	REACH-deklaratsioon
ELi RoHS direktiiv	Vastavus ELi RoHS Deklaratsioon
Elavhõbedavaba	Jah
Hiina EoHS regulatsioon	Hiina RoHS Deklaratsioon
RoHS eranditeave	Jah
Keskkonnaalane avaldus	Toote Keskkonnaprofiil
WEEE	Tootest tuleb Euroopa Liidu turgudel vabaneda vastavuses erijäätmeseadustele ning see ei tohi sattuda olmeprügi sekka.
Halogeensisu	Halogeenivabade plastosadega toode

Contractual warranty

Garantii	18 months
----------	-----------
