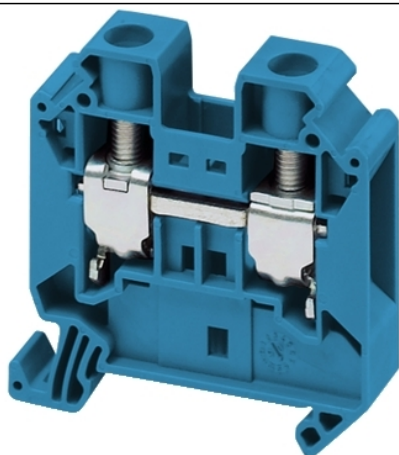


NSYTRV162BL

SCREW TERMINAL, FEED THROUGH, 2 POINTS, 16MM² , BLUE



Main

Range	Lineryg
Product name	Lineryg TR
Product or component type	Terminal block
Device short name	TRV
Accessory / separate part category	Connection accessory
Terminal block type	Passthrough
Terminal block level	1
Mounting mode	Clip-on
Nominal cross section	16 mm ²
Length	55,5 mm
Colour	Blue
Quantity per set	Set of 50

Complementary

Width	12,2 mm
Height	55 mm
Connections - terminals	1 x screw terminal upstream M5) 1 x screw terminal downstream M5)
Number of connections	2
Connection position	Sideways
Number of measurement input	2
Cable cross section	0,2...10 Mm ² , flexible with cable end 0,2...16 Mm ² , solid with cable end 1,5...25 Mm ² , solid without cable end 1,5...25 mm ² , flexible without cable end
Tightening torque	2,5...3 N.m
Wire stripping length	14 mm
Tool type	Connection screwdriver Disconnection screwdriver
[Ue] rated operational voltage	1000 V EN/IEC 60947-7-1 600 V CSA 690 V ATEX Exe II Ex II 2 GD 600 V cURus
[In] rated current	76 A EN/IEC 60947-7-1 85 A cURus 85 A CSA 73 A ATEX Exe II Ex II 2 GD
Material	Polyamide 6/6 insulating case Copper alloy connector and screw Copper alloy commoning link Chromium-nickel steel spring
Dielectric loss	0,01 at 1 MHz IEC 60250 0,01 at 1 MHz VDE 0303-T4
Dielectric constant	3,7 at 1 MHz
Resistivity	10000 MΩ.M IEC 60093 10000 MΩ.m VDE 0303-T30
Surface resistance	1000 GΩ IEC 60093 1000 GΩ VDE 0303-T30
Creep resistance	500 CTI (> 400 kV) IEC 60093 500 CTI (> 400 kV) VDE 0303-T30

Flame retardance	V0 0,8 mm UL 94
Net weight	30 g
Range compatibility	Prisma G Prisma P Prisma PH Prisma Pack Spacial Kaedra Pragma TeSys
Product compatibility	Spacial enclosures

Environment

Product certifications	ATEX DNV VDE EAC CURus CSA GL LR IEC-Ex
Dielectric strength	1000 V IEC 60243-1
Ambient air temperature for operation	-40...130 °C IEC 60216-1 -40...130 °C VDE 0304-T21

Pakke osad

Pakendi tüüp 1	Db
Ühikute arv pakendis 1	1
Package 1 Height	9,500 cm
Pakendi laius 1	11,500 cm
Pakendi pikkus 1	36,000 cm
Pakendi kaal 1	29,000 g
Pakendi tüüp 2	Gyári csomagolás
Ühikute arv pakendis 2	50
Pakendi kõrgus 2	9,500 cm
Pakendi laius 2	11,500 cm
Pakendi pikkus 2	36,000 cm
Pakendi kaal 2	1,552 kg
Pakendi tüüp 3	Doboz
Ühikute arv pakendis 3	300
Pakendi kõrgus 3	30,000 cm
Pakendi laius 3	30,000 cm
Pakendi pikkus 3	40,000 cm
Pakendi kaal 3	9,799 kg

Offer Sustainability

Jätkusuutliku pakkumise olek	Green Premium toode
REACH-määrus	REACH-deklaratsioon
Ilma SVHC REACH-ta	Jah
ELi RoHS direktiiv	Vastavus ELi RoHS Deklaratsioon
Mürgiste raskemetallideta	Jah
Elavhõbedavaba	Jah
Hiina EoHS regulatsioon	Hiina RoHS Deklaratsioon
RoHS eranditeave	Jah
Keskkonnaalane avaldus	Toote Keskkonnaprofiil
WEEE	Tootest tuleb Euroopa Liidu turgudel vabaneda vastavuses erijäätmeseadustele ning see ei tohi sattuda olmeprügi sekka.
Halogeensisu	Halogeenivabade plastosadega toode

Contractual warranty

Garantii	18 months
----------	-----------
