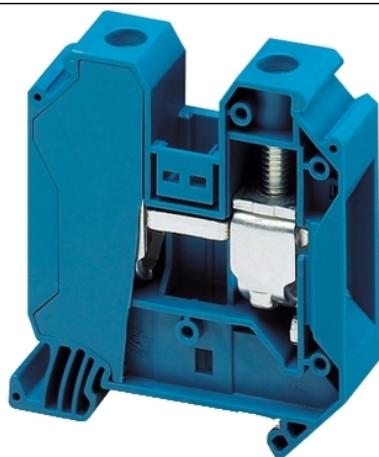


NSYTRV352BL

SCREW TERMINAL, FEED THROUGH, 2 POINTS, 35MM² , BLUE



Main

Range	Lineryg
Product name	Lineryg TR
Product or component type	Terminal block
Device short name	TRV
Accessory / separate part category	Connection accessory
Terminal block type	Passthrough
Terminal block level	1
Mounting mode	Clip-on
Nominal cross section	35 mm ²
Length	60,2 mm
Colour	Blue
Quantity per set	Set of 50

Complementary

Width	16 mm
Height	65,7 mm
Connections - terminals	1 x screw terminal upstream M6) 1 x screw terminal downstream M6)
Number of connections	2
Connection position	Sideways
Number of measurement input	2
Cable cross section	1,5...50 Mm ² , flexible without cable end 1,5...50 Mm ² , solid with cable end 1,5...50 Mm ² , flexible with cable end 1,5...50 mm ² , solid without cable end
Tightening torque	3,2...3,7 N.m
Wire stripping length	18 mm
Tool type	Connection screwdriver Disconnection screwdriver
[Ue] rated operational voltage	1000 V EN/IEC 60947-7-1 600 V CSA 690 V ATEX Exe II Ex II 2 GD 600 V cURus
[In] rated current	125 A EN/IEC 60947-7-1 150 A cURus 150 A CSA 126 A ATEX Exe II Ex II 2 GD
Material	Polyamide 6/6 insulating case Copper alloy connector and screw Copper alloy commoning link Chromium-nickel steel spring
Dielectric loss	0,01 at 1 MHz IEC 60250 0,01 at 1 MHz VDE 0303-T4
Dielectric constant	3,7 at 1 MHz
Resistivity	10000 MΩ.M IEC 60093 10000 MΩ.m VDE 0303-T30
Surface resistance	1000 GΩ IEC 60093 1000 GΩ VDE 0303-T30
Creep resistance	500 CTI (> 400 kB) IEC 60093 500 CTI (> 400 kB) VDE 0303-T30

The information provided in this documentation contains general descriptions and/or technical characteristics of the performance of the products contained herein. This documentation is not intended as a substitute for and is not to be used for determining suitability or reliability of these products for specific user applications. It is the duty of any such user or integrator to perform the appropriate and complete risk analysis, evaluation and testing of the products with respect to the relevant specific application or use thereof. Neither Schneider Electric Industries SAS nor any of its affiliates or subsidiaries shall be responsible or liable for misuse of the information contained herein.

Flame retardance	V0 0,8 mm UL 94
Net weight	61 g
Range compatibility	Prisma G Prisma P Prisma PH Prisma Pack Spacial Kaedra Pragma TeSys
Product compatibility	Spacial enclosures

Environment

Product certifications	IEC-Ex EAC CURus GL CSA VDE ATEX
Dielectric strength	1000 V IEC 60243-1
Ambient air temperature for operation	-40...130 °C IEC 60216-1 -40...130 °C VDE 0304-T21

Pakke osad

Pakendi tüüp 1	Db
Ühikute arv pakendis 1	1
Package 1 Height	1,700 cm
Pakendi laius 1	6,500 cm
Pakendi pikkus 1	6,600 cm
Pakendi kaal 1	57,000 g
Pakendi tüüp 2	Gyári csomagolás
Ühikute arv pakendis 2	50
Pakendi kõrgus 2	9,800 cm
Pakendi laius 2	27,500 cm
Pakendi pikkus 2	17,800 cm
Pakendi kaal 2	2,997 kg
Pakendi tüüp 3	P06
Ühikute arv pakendis 3	1250
Pakendi kõrgus 3	75,000 cm
Pakendi laius 3	60,000 cm
Pakendi pikkus 3	80,000 cm
Pakendi kaal 3	84,925 kg

Offer Sustainability

Jätksuutliku pakkumise olek	Green Premium toode
REACH-määrus	 REACH-deklaratsioon
Ilma SVHC REACH-ta	Jah
ELi RoHS direktiiv	Vastavus  ELi RoHS Deklaratsioon
Mürgiste raskemetallideta	Jah
Elavhõbedavaba	Jah
Hiina EoHS regulatsioon	 Hiina RoHS Deklaratsioon
RoHS eranditeave	 Jah
Keskkonnaalane avaldus	 Toote Keskkonnaprofiil
WEEE	Tootest tuleb Euroopa Liidu turgudel vabaneda vastavuses erijäätmeseadustele ning see ei tohi sattuda olmeprügi sekka.
Halogeensisu	Halogeenivabade plastosadega toode

Contractual warranty

Garantii	18 months
----------	-----------
