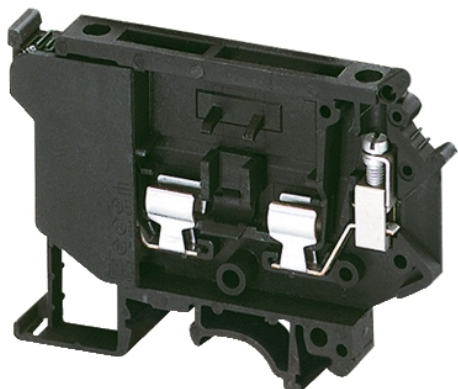


NSYTRV42SF5

SCREW TERMINAL, FUSED, FOR 5X20,5X25,5X30 MM CARTRIDGE FUSE, 2PTS, 4M



Main

Range	Lineryg
Product name	Lineryg TR
Product or component type	Terminal block
Device short name	TRV
Device application	Protection
Terminal block type	Fused disconnect
Terminal block level	1
Mounting mode	Clip-on
Nominal cross section	4 mm ²
Length	72,5 mm
Colour	Black
Quantity per set	Set of 50

Complementary

Fuse size	5 x 20 mm
Width	8,2 mm
Height	56,5 mm
Connections - terminals	1 x screw terminal upstream 1 x screw terminal downstream
Number of connections	2
Connection position	Sideways
Number of measurement input	0
Cable cross section	0,2...4 Mm ² , flexible without cable end 0,2...4 mm ² , solid or flexible with cable end
Tightening torque	0,5...0,8 N.m
Wire stripping length	8 mm
Tool type	Connection screwdriver Disconnection screwdriver
[Ue] rated operational voltage	500 V EN/IEC 60947-7-1 600 V cURus 600 V CSA
[In] rated current	6,3 A EN/IEC 60947-7-1 12 A cURus 6,3 A CSA
Material	Polyamide 6/6 insulating case
Dielectric loss	0,01 at 1 MHz IEC 60250 0,01 at 1 MHz VDE 0303-T4
Dielectric constant	3,7 at 1 MHz
Resistivity	10000 Ω.Cm IEC 60093 10000 Ω.cm VDE 0303-T30
Surface resistance	1000 MOhm IEC 60093 1000 MOhm VDE 0303-T30
Creep resistance	500 CTI (> 400 kB) IEC 60093 500 CTI (> 400 kB) VDE 0303-T30
Flame retardance	V0 0,8 mm UL 94
Net weight	18,3 g

The information provided in this documentation contains general descriptions and/or technical characteristics of the performance of the products contained herein. This documentation is not intended as a substitute for and is not to be used for determining suitability or reliability of these products for specific user applications. It is the duty of any such user or integrator to perform the appropriate and complete risk analysis, evaluation and testing of the products with respect to the relevant specific application or use thereof. Neither Schneider Electric Industries SAS nor any of its affiliates or subsidiaries shall be responsible or liable for misuse of the information contained herein.

Range compatibility	Prisma G Prisma P Prisma PH Prisma Pack Spacial Kaedra Pragma TeSys
Product compatibility	Spacial enclosures

Environment

Product certifications	CURus CSA EAC
Dielectric strength	1000 V IEC 60243-1
Ambient air temperature for operation	-40...130 °C IEC 60216-1 -40...130 °C VDE 0304-T21

Pakke osad

Pakendi tüüp 1	PCE
Ühikute arv pakendis 1	1
Package 1 Height	0,800 cm
Pakendi laius 1	5,000 cm
Pakendi pikkus 1	7,100 cm
Pakendi kaal 1	17,000 g
Pakendi tüüp 2	BB1
Ühikute arv pakendis 2	50
Pakendi kõrgus 2	6,200 cm
Pakendi laius 2	11,300 cm
Pakendi pikkus 2	31,000 cm
Pakendi kaal 2	929,000 g
Pakendi tüüp 3	BB2
Ühikute arv pakendis 3	50
Pakendi kõrgus 3	6,200 cm
Pakendi laius 3	11,300 cm
Pakendi pikkus 3	31,000 cm
Pakendi kaal 3	929,000 g

Offer Sustainability

Jätkusuutliku pakkumise olek	Green Premium toode
REACH-määrus	REACH-deklaratsioon
ELi RoHS direktiiv	Vastavus ELi RoHS Deklaratsioon
Elavhõbedavaba	Jah
Hiina EoHS regulatsioon	Hiina RoHS Deklaratsioon
RoHS eranditeave	Jah
Keskkonnaalane avaldus	Toote Keskkonnaprofiil
WEEE	Tootest tuleb Euroopa Liidu turgudel vabaneda vastavuses erijäätmeseadustele ning see ei tohi sattuda olmeprügi sekka.
Halogeensisu	Halogeenivabade plastosadega toode

Contractual warranty

Garantii	18 months
----------	-----------