

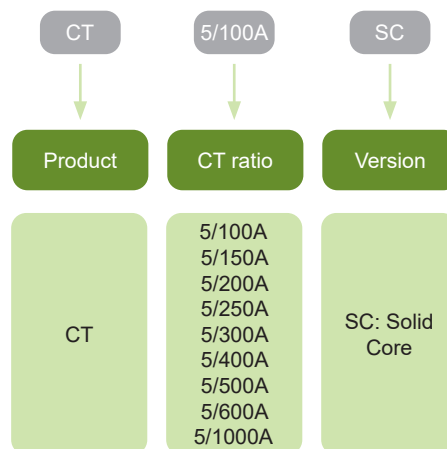
Current Transformers CT



- Solid core
- Primary current up to 1 000A

We offers wide range of solid core current transformers. Their purpose is in measuring primary currents and produce a proportional secondary current signal. They are perfectly suitable for installation in combination with a Ex9EMS 3P 4M CT smart energy meters and Ex9EM 3P 4M CT 1T energy meter.

Type Key



Certification marks



Current Transformers CT

Current transformers - Solid core

- Primary current up to 1000A



Ratio	Article No.	Type	Packing
5/100A	107301	CT 5/100A SC	1/1/100
5/150A	107302	CT 5/150A SC	1/1/100
5/200A	107303	CT 5/200A SC	1/1/100
5/250A	107304	CT 5/250A SC	1/1/100
5/300A	107305	CT 5/300A SC	1/1/100
5/400A	107306	CT 5/400A SC	1/1/60
5/500A	107307	CT 5/500A SC	1/1/60
5/600A	107308	CT 5/600A SC	1/1/60
5/1000A	107309	CT 5/1000A SC	1/1/30

Technical Data CT

Current transformers

General parameters

Primary current up to 1000A

Solid core

Electrical parameters

Max. rated voltage	660 V
Rated frequency f	50/60 Hz
Primary current	100 - 1 000 A
Secondary current	5 A
Class	0.5
Rated insulation voltage U _i	3 kV
Burden	5//100 ... 2.5 VA 5/150 - 5/300 ... 5 VA 5/1000 ... 10 VA

Mechanical parameters

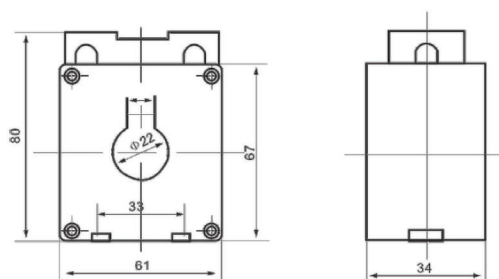
Device width	
5/100 - 5/300	34 mm
5/400 - 5/600	40 mm
5/1000	59 mm
Device height	
5/100 - 5/300	81 mm
5/400 - 5/600	100 mm
5/1000	121 mm
Device depth	
5/100 - 5/300	61 mm
5/400 - 5/600	82 mm
5/1000	125 mm
Terminals	screw terminals
Cable aperture	
5/100 - 5/300	23 mm
5/400 - 5/600	37 mm
5/1000	50 mm
Ambient temperature	-25°C — +40°C
Weight	
5/100 - 5/300	0.25 kg
5/400 - 5/600	0.35 kg
5/1000	0.59 kg

Technical Data CT

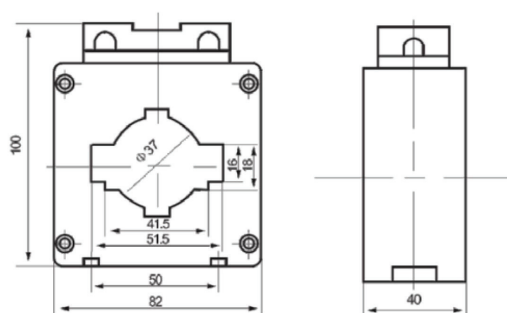
Current transformers

Dimensions

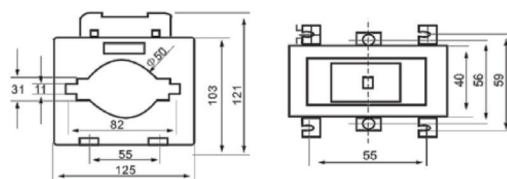
CT 5/100A SC
CT 5/150A SC
CT 5/200A SC
CT 5/250A SC
CT 5/300A SC



CT 5/400A SC
CT 5/500A SC
CT 5/600A SC



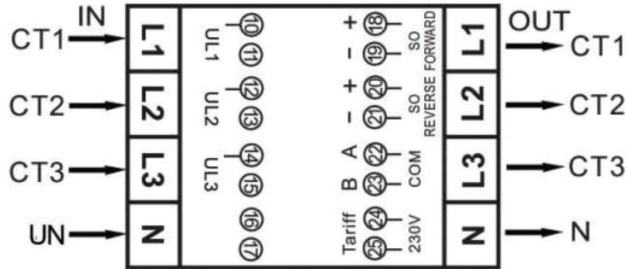
CT 5/1000A SC



Technical Data CT

Current transformers

Wiring diagrams



S1 (on CT) to L1 IN (on the Meter)
S2 (on CT) to L1 OUT (on the Meter)

P1 (on CT) = IN
P2 (on CT) = OUT

Note: Be sure that the cables are in the right direction. If the CT is in the wrong way, then the meter will read in reverse.