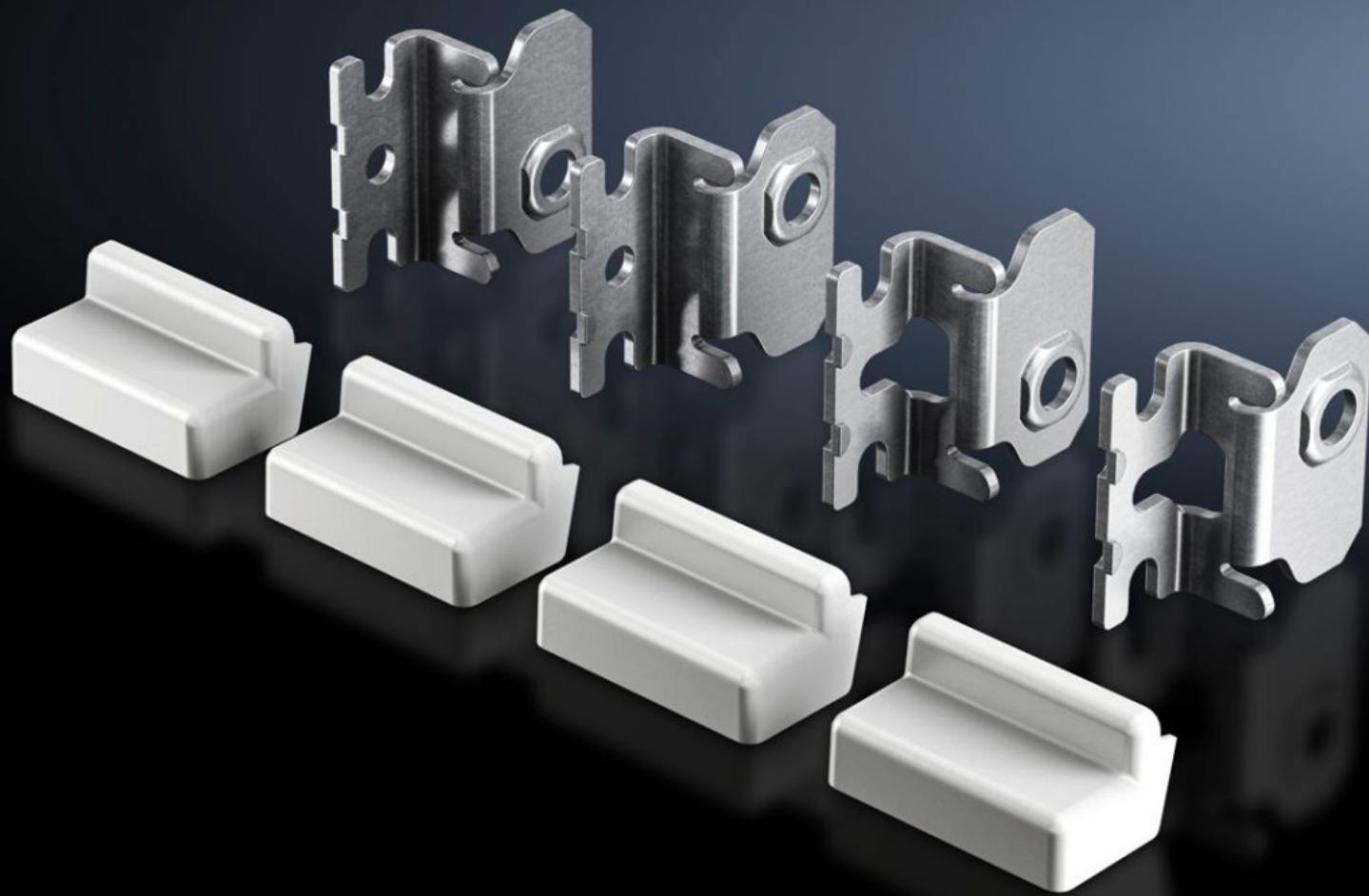


# Rittal – The System.

Faster – better – everywhere.



## AX 2508.020

## Wall mounting bracket

State: 10/10/2023 (Source: [rittal.com/com-en](http://rittal.com/com-en))

ENCLOSURES

POWER DISTRIBUTION

CLIMATE CONTROL

IT INFRASTRUCTURE

SOFTWARE & SERVICES

FRIEDHELM LOH GROUP



# AX 2508.020 - Wall mounting bracket for AX sheet steel, KX sheet steel, AX IT, EL

Ideal for convenient one-person assembly of wall-mounted enclosures, even in confined spaces.

## Features

Model No.	AX 2508.020
Product description	Ideal for convenient one-person assembly of wall-mounted enclosures, even in confined spaces.
Benefits	<p>Screw-fastened directly from the rear with a self-tapping screw into the enclosure eyelet</p> <p>Simply suspend the wall-mounted bracket from a screw in the wall</p> <p>Different mounting positions allow the wall mounting bracket to be tailored to local conditions on site.</p> <p>As an alternative to the self-tapping screw, the support may also be secured from the inside using a screw and nut</p> <p>Additional option of attaching with a nut for dynamic applications</p>
Material	Sheet steel, zinc-plated
Supply includes	Wall mounting bracket Cover cap Assembly parts
Wall distance	20 mm
Type rating to UL 50E	Type 1, 3R, 4, 12
Packs of	4 pc(s).
Weight/pack	0.452 kg
Customs tariff number	73182900
EAN	4028177938281
ETIM 7.0	EC002625
ECLASS 8.0	27189234

# Approvals

---

Approvals

DNV-GL

UL + C-UL - FTTA