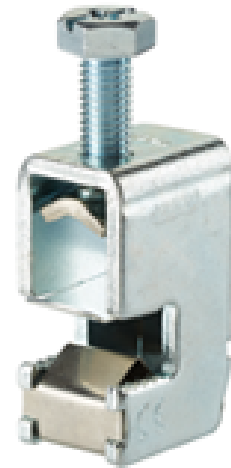


MAE7010H 16-70mm², 10mm bar bimetallic bow terminal

SKU	MAE0701H15
EAN	4744397017970
Color	Natural
Wire material	Al/Cu
Cross-section min. (mm²)	16
Cross-section max. (mm²)	70
Input wire min. (mm²)	16
Input wire max. (mm²)	70
Number of connections	1
Nominal current (A)	400
Nominal voltage (V)	1000
Material	Zinc-plated steel
Mounting method	Busbar
Item width (mm)	21
Item length (mm)	27,5
Item height (mm)	46
Item weight (g)	68
Screw	Pz 3 / SW 13
Flexibar max. width (mm)	9



Flexibar max. layers	6
Tightening torque (Nm)	12
IP rating	IP00
CN8 code	85369001
Package quantity (pcs)	10