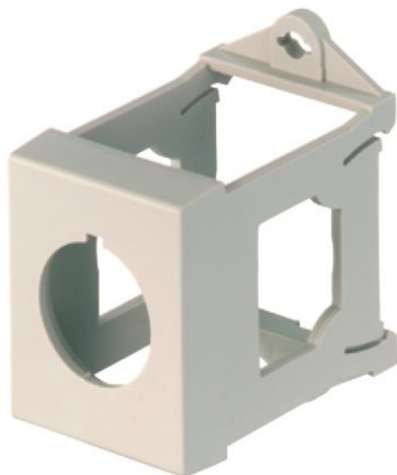


# Eaton 216400

Catalog Number: 216400

Eaton Moeller® series M22 IVS mounting rail adapter



## General specifications

<b>Product Name</b>	<b>Catalog Number</b>
Eaton Moeller® series M22 Accessory Top-hat rail adapter	216400
	<b>Model Code</b>
	M22-IVS
<b>EAN</b>	<b>Product Length/Depth</b>
4015082164003	35 mm
<b>Product Height</b>	<b>Product Width</b>
56 mm	41 mm
<b>Product Weight</b>	<b>Compliances</b>
0.017 kg	CE Marked

## Certifications

EN 60947-5  
CSA Std. C22.2 No. 94-91  
CSA Std. C22.2 No. 14-05  
IEC 60947-5  
UL 508  
UL Category Control No.: NKCR  
IEC/EN 60947-5  
CSA-C22.2 No. 94-91  
CE  
UL File No.: E29184  
CSA-C22.2 No. 14-05  
CSA  
UL  
CSA Class No.: 3211-03  
CSA File No.: 012528

## Resources

### Brochures

[RMQ Titan - brochure](#)

[RMQ MCI - Flyer](#)

[RMQ Titan emergency stop push button - Flyer](#)

[RMQ Flat Enclosure - Flyer](#)

[RMQ Small E-Stop - Flyer](#)

### Catalogues

[Flip catalog - Product Range Catalog - Command and indication](#)

[Product Range Catalog Command and Indication Control Circuit Devices, Signal Towers](#)

### Certification reports

[DA-DC-00004135.pdf](#)

[DA-DC-00004157.pdf](#)

### Drawings

[eaton-operating-adapter-m22-top-hat-rail-adapter-dimensions.eps](#)

### eCAD model

[DA-CE-ETN.M22-IVS](#)

### Installation instructions

[IL04716002Z](#)

### Installation videos

[RMQ Flat Design](#)

### mCAD model

[DA-CS-adapter\\_ivs](#)

[DA-CD-adapter\\_ivs](#)

### System overview

[Pilot devices - selection aid](#)



Eaton Corporation plc  
Eaton House  
30 Pembroke Road  
Dublin 4, Ireland  
Eaton.com

© 2023 Eaton. All rights reserved.

Eaton is a registered trademark.

All other trademarks are property of their respective owners.



[Eaton.com/socialmedia](https://www.eaton.com/socialmedia)