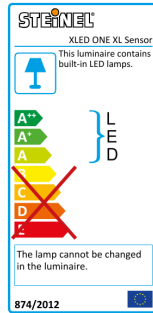
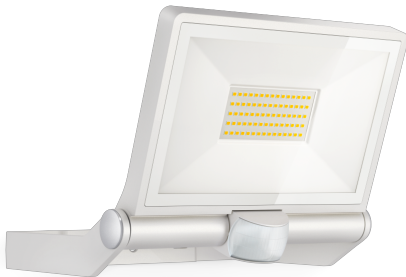


Sensor-switched LED floodlight

XLED ONE XL Sensor

white

EAN 4007841 065270



LED

long life LED
50.000 h



3000K
warm-white



infrared sensor
180°



max. 12 m



IP44



180° vertical



180° vertical



2 - 2000 lux



8 sec - 35 min



Indoor/Outdoor

Function description

Powerful illumination. Effective protection. The XLED ONE XL Sensor wall and ceiling spot can be tilted through 180° and illuminates its surroundings with day-bright light. In numbers: 3000 K and 4400 lm from 43,5 W. With infrared sensor, 180° angle of coverage, 12 m reach, twilight setting (2-2000 lux) as well as time setting (8 s to 35 min). Protection class: IP44.

Technical specifications

Dimensions (L x W x H)	222 x 259 x 215 mm
Mains power supply	230 – 240 V / 50 – 60 Hz
Mounting height max.	3,00 m
Sensor Technology	passive infrared
Output	43,5 W
Interconnection	No
Luminous flux	4400 lm
Colour temperature	3000 K
Colour variation LED	SDCM3
Colour Rendering Index CRI	80-89
With lamp	Yes, STEINEL LED system
Lamp	LED cannot be replaced
LED life expectancy (max. °C)	50000 h
Drop in luminous flux in accordance with LM80	L70B10
LED cooling system	Passive Thermo Control
With motion detector	Yes
Detection angle	180 °
Sneak-by guard	No

Capability of masking out individual segments	Yes
Reach, radial	r = 3 m (14 m ²)
Reach, tangential	r = 12 m (226 m ²)
Photo-cell controller	Yes
Twilight setting	2 – 2000 lx
Time setting	8 s – 35 Min.
Basic light level function	No
Soft light start	No
Impact resistance	IK03
IP-rating	IP44
Protection class	I
Ambient temperature	-20 – 40 °C
Housing material	Aluminium
Cover material	Glass transparent
Manufacturer's Warranty	3 years
PU1, net weight	1,396 kg
Version	white
PU1, EAN	4007841065270

Sensor-switched LED floodlight

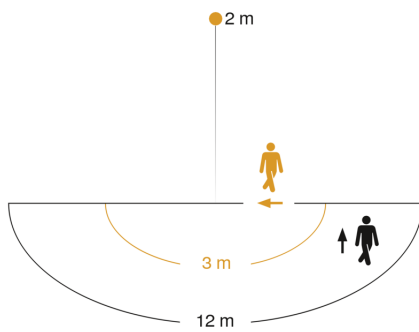
XLED ONE XL Sensor

white

EAN 4007841 065270



Detection Zone



Mögliche Montagehöhe: 1,80 m – 3,00 m

Orange: radial

Schwarz: tangential

Dimension Drawing

