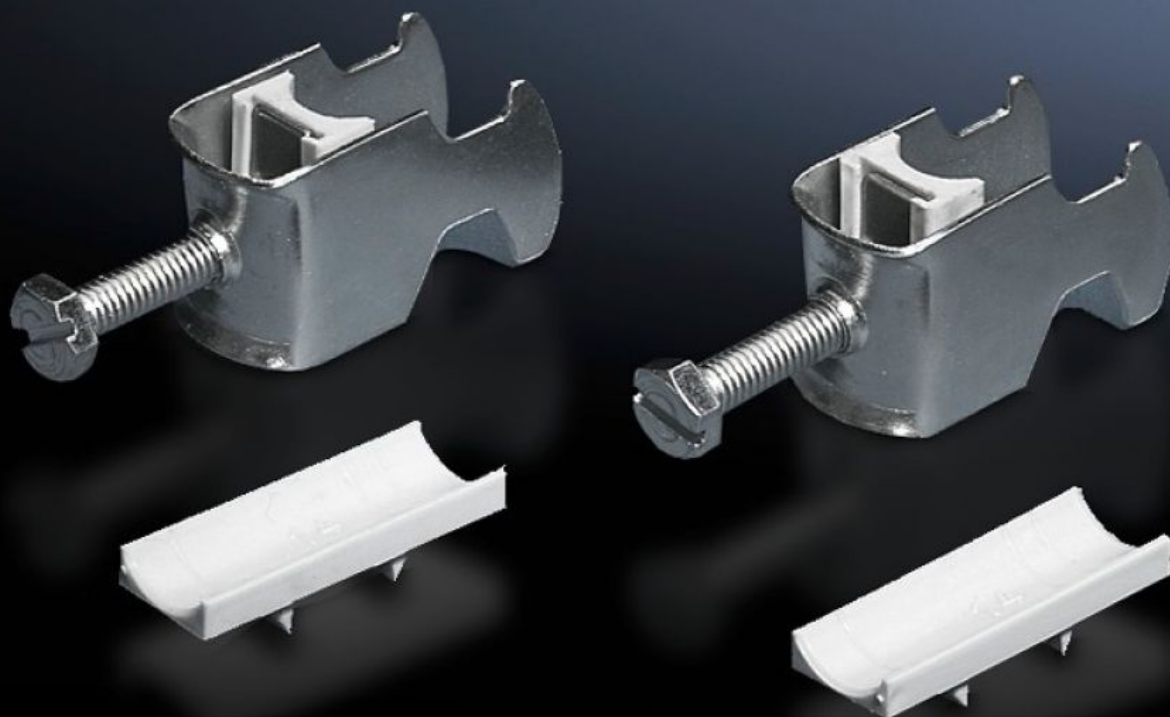


# Rittal – The System.

Faster – better – everywhere.



## DK 7097.000 Cable clip

State: 24/09/2024 (Source: [rittal.com/com-en](http://rittal.com/com-en))

ENCLOSURES

POWER DISTRIBUTION

CLIMATE CONTROL

IT INFRASTRUCTURE

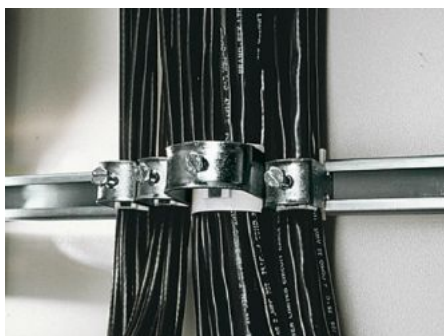
SOFTWARE & SERVICES

FRIEDHELM LOH GROUP



# DK 7097.000 - Cable clip for C rail, combination rail

For attaching cables to the C rail.



## Features

Model No.	DK 7097.000
Design	for cable diameter 18 – 22 mm
Product description	For attaching cables to the C rail.
Material	Sheet steel
Surface finish	Zinc-plated
Supply includes	Plastic insert
Min. cable diameter	18 mm
Max. cable diameter	22 mm
Packs of	25 pc(s).
Weight/pack	1.025 kg
Net weight	0.975
Gross weight	1
PCF/PU (Cradle-to-Gate)	3.9 kg CO2 eq (Cat B)
Note on the PCF class	Category B: PCF value (cradle-to-gate) approximated based on product weight and self-declared
Customs tariff number	73269098
EAN	4028177124523
ETIM 8	EC000127

# Features

---

ETIM 7.0	EC000127
ECLASS 8.0	23140202

---

## Tender text

Cable clamps 18 - 22 mm

For attaching cables to C rails. For cable diameter 18-22 mm.

Material: sheet steel, zinc-plated, passivated, with plastic insert.