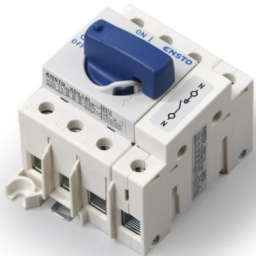


# Datasheet



ENSTO COMPACT SWITCHES ENSTO

Load break switch rotary 3 x 100A + switched neutral  
REF. KSM3.100N | EAN. 6438100099398

> [Visit e-catalogue](#)

### Description

Ensto Compact is a complete range of rotary switches from 16 A to 125 A.

### Technical characteristics

Version as main switch	Yes
Version as maintenance-/service switch	Yes
Version as safety switch	No
Version as emergency stop installation	No
Version as reversing switch	No
Max. rated operation voltage Ue AC	690 V
Rated operating voltage	400 - 690 V
Rated permanent current at AC-21, 400 V	100 A
Rated short-time withstand current Icw	1.5 kA
Rated operation power at AC-23, 400 V	45 kW
Conditioned rated short-circuit current Iq	25 kA

Number of poles	3
Motor drive optional	No
Motor drive integrated	No
Voltage release optional	No
Device construction	Complete device in housing
Suitable for distribution board installation	Yes
Colour control element	Other
Type of control element	Short thumb-grip
Interlockable	Yes
Type of electrical connection of main circuit	Screw connection

### Documentation

#### Technical documentation

 IG\_0000003841\_V1.pdf | PDF (0.46Mo)