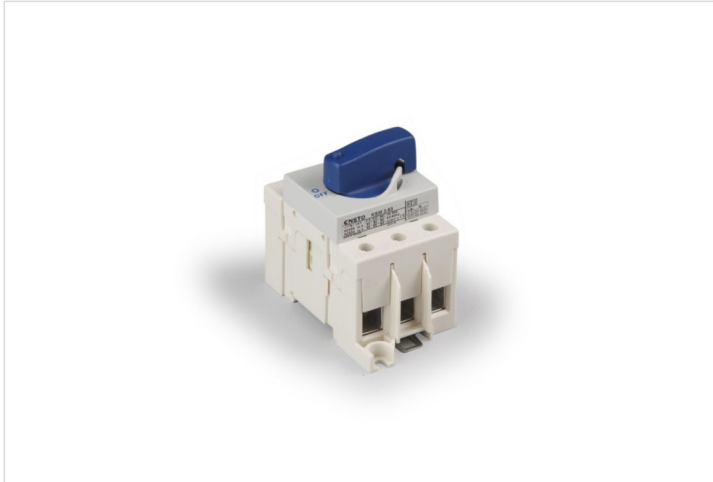


Product data sheet



ENSTO COMPACT SWITCHES ENSTO

Load break switch rotary 3 x 80 A

REF. KSM3.80 | EAN. 6418677169755

> [The product details page](#)

Tehnilised omadused

Version as main switch	Yes
Version as maintenance-/service switch	Yes
Version as safety switch	No
Version as emergency stop installation	No
Version as reversing switch	No
Max. rated operation voltage Ue AC	690 V
Rated operating voltage	400 - 690 V
Rated permanent current at AC-21, 400 V	80 A
Rated short-time withstand current Icw	1.5 kA
Rated operation power at AC-23, 400 V	45 kW
Conditioned rated short-circuit current Iq	25 kA
Number of poles	3

Motor drive optional	No
Motor drive integrated	No
Voltage release optional	No
Device construction	Complete device in housing
Suitable for front mounting 4-hole	No
Suitable for front mounting centre	No
Suitable for distribution board installation	Yes
Colour control element	Other
Type of control element	Short thumb-grip
Interlockable	Yes
Type of electrical connection of main circuit	Screw connection

Dokumentatsioon

Lepingud ja sertifikaadid

→ [CE_KS-KSM_2024_EN.pdf](#) | PDF (0.05Mo)