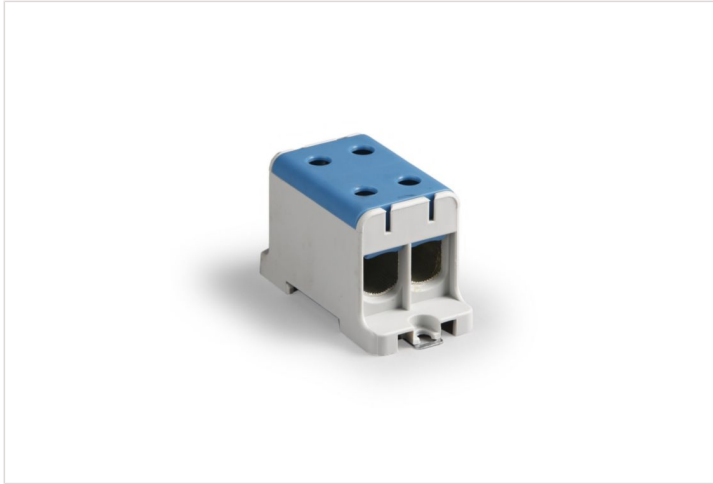


Product data sheet



ENSTO CLAMPO PRO ENSTO

Tapping connector Blue , Al/Cu 16-95 mm²

REF. KE67.2 | EAN. 6418677191985

> [The product details page](#)

Tehnilised omadused

Connectable conductor cross section fine-strand without cable end sleeve	50 - 70 mm ²
Connectable conductor cross section fine-strand with cable end sleeve	16 - 70 mm ²
Connectable conductor cross section multi-wired	16 - 95 mm ²
Rated current In	220 A
Rated voltage	800 V
Type of electrical connection 1	Screw connection
Type of electrical connection 2	Screw connection
Number of levels	1

Number of clamp positions per level	4
Mounting method	DIN rail (top hat rail) 35 mm
Material insulation body	Thermoplastic
Operating temperature	-5 - 80 °C
Inflammability class of insulation material according to UL94	V2
Explosion-tested version 'Ex e'	No
Colour	Blue

Dokumentatsioon

CAD & Disaini spetsifikatsioonid / BIM

→ 3D_KE67_PK2_V1.stp | IFC (7.01Mo)

Lepingud ja sertifikaadid

→ CE_KE67_2024_EN.pdf | PDF (0.05Mo)