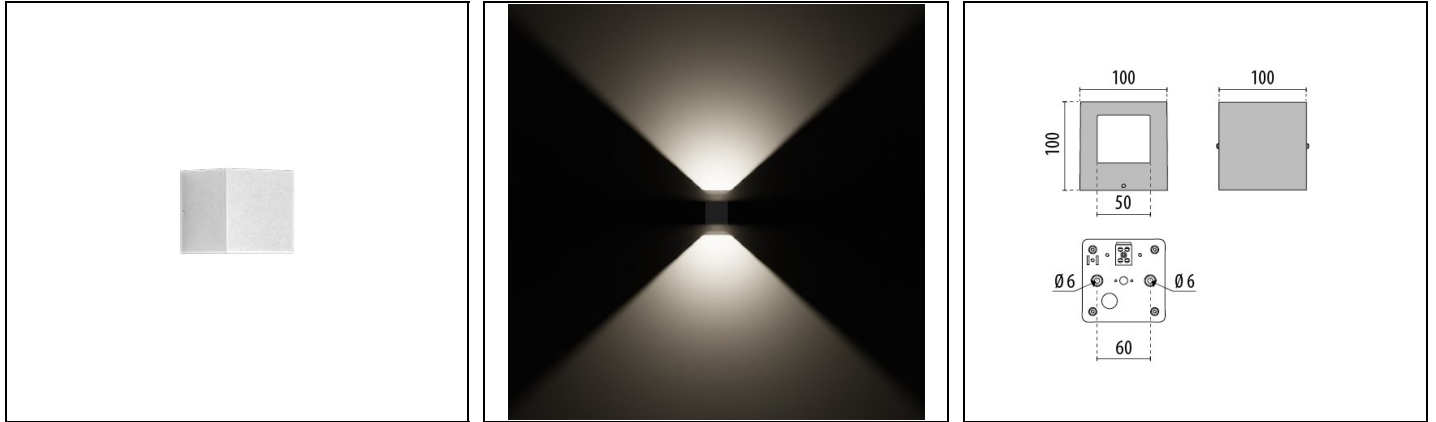


QUASAR 10 2WB

Part number 303453



Description

Wall-mounted LED luminaire, comprising:

- Die-cast aluminium housing, polyester powder coat finish ISO 9227/12944 - ISO 9223 (C5)
- Secured diffuser in printed transparent flat glass
- Foam polymer sealing gasket
- Stainless steel locking hardware
- Built-in driver
- Openable and maintainable luminaire (future-proof)

To maintain the regular updating of our products, PERFORMANCE iN LIGHTING reserves the right to make changes without prior notice. For the most up to date information we always recommend you read the latest version published on the website www.performanceinlighting.com. Delivered luminaire lumen outputs and power consumptions, including losses, are subject to a tolerance of +/- 7%, and unless otherwise stated the values apply to an ambient temperature of 25°C. Terms of warranty are available at <https://www.performanceinlighting.com/qr/company/led-warranty>

Product data

| | | | |
|-------------|----------|-------------|----------|
| ETIM Group: | EG000027 | ETIM Class: | EC002892 |
|-------------|----------|-------------|----------|

General information

| | | | |
|--------------------------------|--------------------------|------------------------------|------|
| Lampholder: | LED | Light source: | LED |
| Lightsource lumen output [lm]: | 460 | Luminaire lumen output [lm]: | 235 |
| Luminaire wattage [W]: | 6 W | Luminous efficacy [lm/W]: | 39 |
| CRI: | 80 | Colour temperature [K]: | 4000 |
| Colour / Finishing: | WH-87 / White / Textured | IP degree of protection: | IP44 |
| IK-J-xxIP: | IK02 0.2J xx0 | Protection class: | I |
| Optic: | R - Surface effects | Net weight [kg]: | 1.01 |
| Overall length [mm]: | 100 | Overall width [mm]: | 100 |
| Overall height [mm]: | 100 | | |

Mechanical features

| | | | |
|--------------------|----------------------|-------------------|-----------|
| Shape: | Square \leq 150 mm | Housing material: | Aluminium |
| Diffuser material: | Glass | | |

Electrical features

| | | | |
|------------------------------|----------|-----------------------------|---------|
| Voltage type: | AC | Input voltage [V AC]: | 220/240 |
| Input frequency [Hz]: | 50/60 | Power factor / COS Φ : | >0.9 |
| Inrush current [A/ μ s]: | 27 / 250 | C10 1.5 mm ² : | 28 |
| C16 2.5 mm ² : | 45 | B10 1.5 mm ² : | 17 |
| B16 2.5 mm ² : | 27 | | |

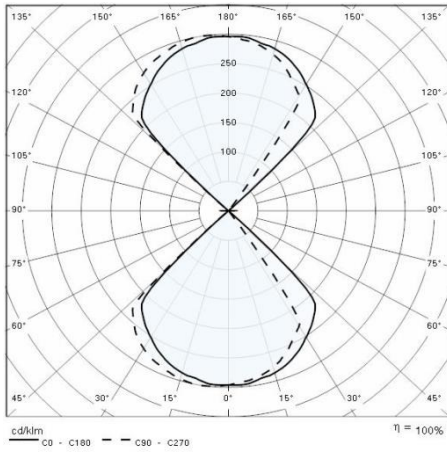
Installation

| | | | |
|--------------------------------|---------|--------------------------------|--------------|
| Application area: | Outdoor | Mounting type: | Wall surface |
| Min. ambient temperature [°C]: | -10 | Max. ambient temperature [°C]: | 30 |

Light features

| | | | |
|---------------------------------|-----------------|--------------------|---------------|
| MacAdam: | 3 | Lumen maintenance: | L80B10@50000h |
| Distribution of light emission: | Direct/Indirect | | |

Photometric data



To maintain the regular updating of our products, PERFORMANCE iN LIGHTING reserves the right to make changes without prior notice. For the most up to date information we always recommend you read the latest version published on the website www.performanceinlighting.com. Delivered luminaire lumen outputs and power consumptions, including losses, are subject to a tolerance of +/- 7%, and unless otherwise stated the values apply to an ambient temperature of 25°C. Terms of warranty are available at <https://www.performanceinlighting.com/qr/company/led-warranty>