



CoreLine surface mounted gen 4

SM136V G4 36_45_60S/840 PSD W20L120 OC

CoreLine surface mounted gen 4, All-in, 38.5 W, 23 W, 200x1200 mm, 3600 lm, 4500 lm, 6000 lm, 4000 K, DALI, UGR19

Introducing Philips CoreLine surface-mounted gen4, a family of high-quality and innovative light fixtures designed to deliver energy-efficient and long-lasting illumination for your home or office. With higher lumen packages up to 6800 lm, improved efficiency of up to 160 lm/W, and a longer lifetime of L90@50K hrs/ L80@100K hrs, our CoreLine family provides bright and long-lasting illumination. Our surface-mounted light fixtures feature DC plugs in all versions, packaging from a single box to 4-in-1, and plastics-free packaging, making them eco-friendly and cost-effective. Our CoreLine surface-mounted gen4 features the same green quick connectors as the CoreLine panel, and is compatible with Wieland GSTi3 and GST/5 connectors. Upgrade your lighting today with Philips CoreLine surface-mounted gen4, a high-quality and innovative solution that delivers on the Philips promise of energy-efficient and long-lasting illumination.

Product data

General Information	
Number of gear units	1 unit
Driver included	Yes
Value ladder	Performance
Serviceability class	Class C, luminaire without serviceable parts, not serviceable
Warranty period	5 years
Sustainability rating	-

Light Technical	
Luminous Flux	3,600 4,500 6,000 lm
Correlated Color Temperature (Nom)	4000 K
Luminous Efficacy (rated) (Nom)	157 155 lm/W
Color rendering index (CRI)	>80
Light source color	840 neutral white
Optic type	Wide beam office compliant
Luminaire light beam spread	80°
Unified glare rating CEN	19

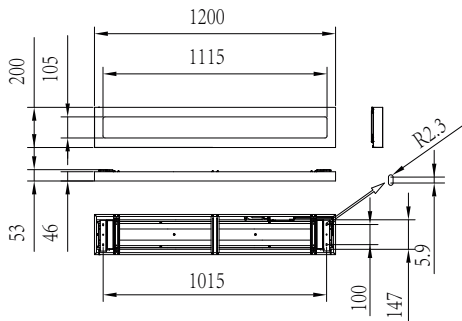
CoreLine surface mounted gen 4

All-in Type	All-in, Multi Lumen
Operating and Electrical	
Input Voltage	220-240 V
Line Frequency	50 or 60 Hz
Inrush current	5.33 A
Inrush time	0.04 ms
Power Consumption	38.5 23 W
Power Factor (Fraction)	0.9
Connection	Push-in connector 5-pole
Cable	Cable without plug 5-pole
Number of products on MCB of 16 A type B	46
Suitable for random switching	No
Protection class IEC	Safety class II
Controls and Dimming	
Dimmable	Yes
Driver/power unit/transformer	Power supply unit with DALI interface
Control interface	DALI
Constant light output	No
DALI Standard	DALI-2™
Mechanical and Housing	
Housing Material	Steel
Reflector material	Steel
Optic material	Polycarbonate
Optical cover material	Polycarbonate
Fixation material	-
Housing Color	White
Optical cover finish	Microprismatic lens
Overall length	1,200 mm
Overall width	200 mm
Overall height	53 mm
Dimensions (Height x Width x Depth)	53 x 200 x 1200 mm
Ingress protection code	IP20/44 [Finger-protected; wire-protected, splash-proof]
Mech. impact protection code	IK03 [0.35 J reinforced]
Mounting	Surface
Net Weight (Piece)	3.590 kg

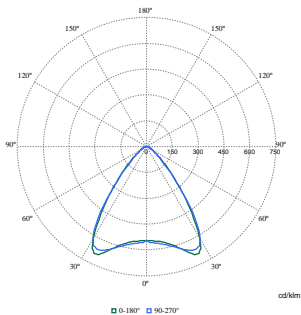
Approval and Application	
Glow-wire test	Temperature 650 °C, duration 30 s
Flammability mark	For mounting on normally flammable surfaces
CE mark	Yes
ENEC mark	KEMA Netherlands
Photobiological risk	Photobiological risk group 0 @200mm to EN62778
EU RoHS compliant	Yes
Performance ambient temperature Tq	25 °C
Ambient temperature range	-10 to +40 °C
Initial Performance (IEC Compliant)	
Luminous flux tolerance	+/-10%
Initial chromaticity	(0.38.0.38)SDCM<3
Power consumption tolerance	+/-10%
Over Time Performance (IEC Compliant)	
Control gear failure rate at median useful life 50000 h	5 %
Lumen maintenance (EN-IEC 62722-2-1) at median useful life* 50000 h	L90
Lumen maintenance (EN-IEC 62722-2-1) at median useful life* 100000 h	L80
Product Data	
Order product name	SM136V G4 36_45_60S/840 PSD W20L120 OC
Full product name	SM136V G4 36_45_60S/840 PSD W20L120 OC
Full product code	872016976424899
Order code	911401841987
Material Nr. (12NC)	911401841987
Numerator - Quantity Per Pack	1
EAN/UPC - Product/Case	8720169764248
Numerator - Packs per outer box	4
EAN/UPC - Case	8720169764521

CoreLine surface mounted gen 4

Dimensional drawing



Photometric data



Polar Normal (separate) - null - 911401841987

