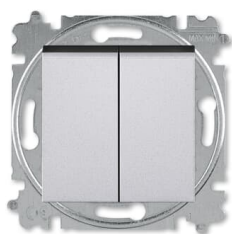




PRODUCT-DETAILS

3559H-A53445 70W

Flush Mounted Inserts 2-gang Rocker lever 2 rocker 250 V



General Information

| | |
|-------------------------------|--|
| Extended Product Type: | 3559H-A53445 70W |
| Product ID: | 2CHH595345A6070 |
| Catalog Description: | Flush Mounted Inserts 2-gang Rocker lever 2 rocker 250 V |
| Long Description: | Switch 2 gang 2-way + 2-way retractive |
| Display Name: | 3559H-A53445 70W |

Installation

| | |
|----------------------------------|---|
| Instructions and Manuals: | No document needed |
| Mounting Type: | Flush Mounted |
| Type of Fastening: | Mounting with Claw Mounting with Screw |

Environmental

Degree of Protection: IP20

Technical

Data Sheet, Technical Information: 9AKK107991A4554

Number of Rocker Switches: 2

Wiring Configuration: Two-way switch

Actuator Type: Rocker lever

Connection Type: Plug Clamp

Illumination: Non-illuminated

Battery Weight: 0 g

Electrical

Rated Voltage (U_r): 250 V

Rated Current (I_n): 10 A

Design

Design Range: Levit

Surface Finishing: Lacquered
Matt

Material: Thermoplastic
Plastic

Label Space Provided: Without Label Space

Color: titanium

Number of Gangs: 2-gang

Dimensions

Built-In Depth (t₂): 17 mm

Ordering

Replaced Product ID (OLD): 3559H-A53445 70W

Material Compliance

RoHS Declaration: 2CHC663079X0201

RoHS Information: Following EU Directive 2011/65/EU and Amendment 2015/863 July 22, 2019

REACH Declaration: 2CHC663999X0201

REACH Information: False - does not contain substances > 0.1 mass percentage

| | |
|---|--|
| REACH Date: | 20251022 |
| Conflict Minerals Reporting Template (CMRT): | 9AKK108468A3363 |
| WEEE Category: | 5. Small Equipment (No External Dimension More Than 50 cm) |
| WEEE B2C / B2B: | Business To Business |

Certificates and Declarations

| | |
|--|-----------------|
| Declaration of Conformity - CE: | 2CHC663019X9901 |
| EU Data Act Applicability and Compliance: | Not Applicable |

External Classifications and Standards

| | |
|-----------------|--------------------------------|
| ETIM 9: | EC001590 - Installation switch |
| ETIM 10: | EC001590 - Installation switch |

Categories

Products > Low Voltage Products and Systems > Wiring Accessories - Light Switch Ranges > Flush Mounted Inserts > Electronic Inserts

