

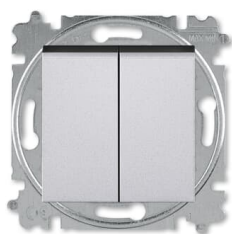


---

**PRODUCT-DETAILS**

## 3559H-A52445 70W

### Flush Mounted Inserts 2-gang Rocker lever 2 rocker 250 V



---

**General Information**

|                               |  |
|-------------------------------|--|
| <b>Extended Product Type:</b> | 3559H-A52445 70W   |
| <b>Product ID:</b>            | 2CHH595245A6070  |
| <b>Catalog Description:</b>   | Flush Mounted Inserts 2-gang Rocker lever 2 rocker 250 V |
| <b>Long Description:</b>      | Switch 2 gang 2 way                                      |
| <b>Display Name:</b>          | 3559H-A52445 70W   |

---

**Installation**

|                                  |   |
|----------------------------------|---|
| <b>Instructions and Manuals:</b> | No document needed                        |
| <b>Mounting Type:</b>            | Flush Mounted                             |
| <b>Type of Fastening:</b>        | Mounting with Claw<br>Mounting with Screw |

---

**Environmental**

Degree of Protection: IP20

---

---

## Technical

---

Data Sheet, Technical Information: 9AKK107991A4554

Number of Rocker Switches: 2

Wiring Configuration: Two-way switch

Actuator Type: Rocker lever

Connection Type: Plug Clamp

Illumination: Non-illuminated

Battery Weight: 0 g

---

---

## Electrical

---

Rated Voltage ( $U_r$ ): 250 V

Rated Current ( $I_n$ ): 10 A

Maximum Switching Current: Fluorescent Lamps 10

---

---

## Design

---

Design Range: Levit

Surface Finishing: Lacquered  
Matt

Material: Thermoplastic  
Plastic

Label Space Provided: Without Label Space

Color: titanium

Number of Gangs: 2-gang

---

---

## Dimensions

---

Built-In Depth ( $t_2$ ): 17 mm

---

---

## Ordering

---

Replaced Product ID (OLD): 3559H-A52445 70W

---

---

## Material Compliance

---

RoHS Declaration: 2CHC663079X0201

RoHS Information: Following EU Directive 2011/65/EU and Amendment 2015/863 July 22, 2019

REACH Declaration: 2CHC663999X0201

---

|   |  |
|---|--|
| <b>REACH Information:</b>                           | False - does not contain substances > 0.1 mass percentage  |
| <b>REACH Date:</b>                                  | 20251022   |
| <b>Conflict Minerals Reporting Template (CMRT):</b> | 9AKK108468A3363  |
| <b>WEEE Category:</b>                               | 5. Small Equipment (No External Dimension More Than 50 cm) |
| <b>WEEE B2C / B2B:</b>                              | Business To Business                                       |

---

### Certificates and Declarations

---

|  |                 |
|--|-----------------|
| <b>Declaration of Conformity - CE:</b>           | 2CHC663019X9901 |
| <b>EU Data Act Applicability and Compliance:</b> | Not Applicable  |

---

### External Classifications and Standards

---

|                 |                                |
|-----------------|--------------------------------|
| <b>ETIM 9:</b>  | EC001590 - Installation switch |
| <b>ETIM 10:</b> | EC001590 - Installation switch |

---

### Categories

---

Products > Low Voltage Products and Systems > Wiring Accessories - Light Switch Ranges > Flush Mounted Inserts > Electronic Inserts

