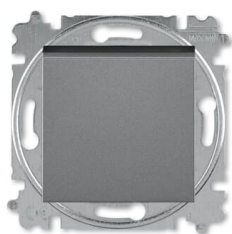




PRODUCT-DETAILS

3559H-A02445 69W

Flush Mounted Inserts 1-gang Rocker lever 1 rocker 250 V



General Information

Extended Product Type:	3559H-A02445 69W
Product ID:	2CHH590245A6069
Catalog Description:	Flush Mounted Inserts 1-gang Rocker lever 1 rocker 250 V
Long Description:	Switch, two-pole, 1 gang 1 way
Display Name:	3559H-A02445 69W

Installation

Instructions and Manuals:	No document needed
Mounting Type:	Flush Mounted
Type of Fastening:	Mounting with Claw Mounting with Screw

Environmental

Degree of Protection: IP20

Technical

Data Sheet, Technical Information: 9AKK107991A4554

Number of Rocker Switches: 1

Wiring Configuration: 2-pole switch

Actuator Type: Rocker lever

Connection Type: Plug Clamp

Illumination: Non-illuminated

Battery Weight: 0 g

Electrical

Rated Voltage (U_r): 250 V

Rated Current (I_n): 10 A

Maximum Switching Current: Fluorescent Lamps 10

Design

Design Range: Levit

Surface Finishing: Lacquered
Matt

Material: Thermoplastic
Plastic

Label Space Provided: Without Label Space

Color: stainless steel

Number of Gangs: 1-gang

Dimensions

Built-In Depth (t₂): 17 mm

Ordering

Replaced Product ID (OLD): 3559H-A02445 69W

Material Compliance

RoHS Declaration: 2CHC663079X0201

RoHS Information: Following EU Directive 2011/65/EU and Amendment 2015/863 July 22, 2019

REACH Declaration: 2CHC663999X0201

REACH Information:	False - does not contain substances > 0.1 mass percentage
REACH Date:	20251022
Conflict Minerals Reporting Template (CMRT):	9AKK108468A3363
WEEE Category:	5. Small Equipment (No External Dimension More Than 50 cm)
WEEE B2C / B2B:	Business To Business

Certificates and Declarations

Declaration of Conformity - CE:	2CHC663019X9901
EU Data Act Applicability and Compliance:	Not Applicable

External Classifications and Standards

ETIM 9:	EC001590 - Installation switch
ETIM 10:	EC001590 - Installation switch

Categories

Products > Low Voltage Products and Systems > Wiring Accessories - Light Switch Ranges > Flush Mounted Inserts > Electronic Inserts

