

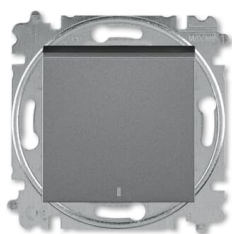


---

**PRODUCT-DETAILS**

## 3559H-A06446 69W

### Flush Mounted Inserts 1-gang Rocker lever with LED exchangeable 1 rocker 250 V



---

**General Information**

<b>Extended Product Type:</b>	3559H-A06446 69W
<b>Product ID:</b>	2CHH590646A6069
<b>Catalog Description:</b>	Flush Mounted Inserts 1-gang Rocker lever with LED exchangeable 1 rocker 250 V
<b>Long Description:</b>	Switch 1 gang 2 way with LED lamp (orientation light)
<b>Display Name:</b>	3559H-A06446 69W

---

**Installation**

<b>Instructions and Manuals:</b>	No document needed
<b>Mounting Type:</b>	Flush Mounted
<b>Type of Fastening:</b>	Mounting with Claw Mounting with Screw

---

**Environmental**

Degree of Protection: IP20

## Technical

Data Sheet, Technical Information:	9AKK107991A4554
Function:	Function lighting: Orientation
Number of Rocker Switches:	1
Wiring Configuration:	Two-way switch
Actuator Type:	Rocker lever
Connection Type:	Plug Clamp
Lamp Type:	LED exchangeable
Illumination:	Illuminated
Battery Weight:	0 g

## Electrical

Rated Voltage ( $U_r$ ):	250 V
Rated Current ( $I_n$ ):	10 A
Maximum Switching Current:	Fluorescent Lamps 10

## Design

Design Range:	Levit
Surface Finishing:	Lacquered Matt
Material:	Thermoplastic Plastic
Label Space Provided:	Without Label Space
Color:	stainless steel
Number of Gangs:	1-gang

## Dimensions

Built-In Depth ( $t_2$ ):	17 mm
---------------------------	-------

## Ordering

Replaced Product ID (OLD):	3559H-A06446 69W
----------------------------	------------------

## Material Compliance

RoHS Declaration:	2CHC663079X0201
-------------------	-----------------

<b>RoHS Information:</b>	Following EU Directive 2011/65/EU and Amendment 2015/863 July 22, 2019
<b>REACH Declaration:</b>	2CHC663999X0201
<b>REACH Information:</b>	False - does not contain substances > 0.1 mass percentage
<b>REACH Date:</b>	20251022
<b>Conflict Minerals Reporting Template (CMRT):</b>	9AKK108468A3363
<b>WEEE Category:</b>	5. Small Equipment (No External Dimension More Than 50 cm)
<b>WEEE B2C / B2B:</b>	Business To Business

---

## Certificates and Declarations

---

<b>Declaration of Conformity - CE:</b>	2CHC663019X9901
<b>EU Data Act Applicability and Compliance:</b>	Not Applicable

---

## External Classifications and Standards

---

<b>ETIM 9:</b>	EC001590 - Installation switch
<b>ETIM 10:</b>	EC001590 - Installation switch

---

## Categories

---

Products > Low Voltage Products and Systems > Wiring Accessories - Light Switch Ranges > Flush Mounted Inserts > Electronic Inserts

