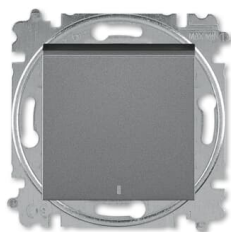




PRODUCT-DETAILS

3559H-A01446 69W

Flush Mounted Inserts 1-gang Rocker lever with LED exchangeable 1 rocker 250 V



General Information

Extended Product Type:	3559H-A01446 69W
Product ID:	2CHH590146A6069
EAN:	8592624111054
Catalog Description:	Flush Mounted Inserts 1-gang Rocker lever with LED exchangeable 1 rocker 250 V
Long Description:	Switch 1 gang 1 way with LED lamp (orientation light)
Display Name:	3559H-A01446 69W

Installation

Instructions and Manuals:	No document needed
Mounting Type:	Flush Mounted
Type of Fastening:	Mounting with Claw Mounting with Screw

Environmental

Degree of Protection:	IP20
-----------------------	------

Technical

Data Sheet, Technical Information:	9AKK107991A4554
Function:	Function lighting: Orientation
Number of Rocker Switches:	1
Wiring Configuration:	Off switch 1-pole
Actuator Type:	Rocker lever
Connection Type:	Plug Clamp
Lamp Type:	LED exchangeable
Illumination:	Illuminated
Battery Weight:	0 g

Electrical

Rated Voltage (U_r):	250 V
Rated Current (I_n):	10 A
Maximum Switching Current:	Fluorescent Lamps 10

Design

Design Range:	Levit
Surface Finishing:	Lacquered Matt
Material:	Thermoplastic Plastic
Label Space Provided:	Without Label Space
Color:	stainless steel
Number of Gangs:	1-gang

Dimensions

Product Net Width:	50 mm
Product Net Height:	71 mm
Product Net Depth / Length:	71 mm
Product Net Weight:	66.06 g
Built-In Depth (t_2):	17 mm

Ordering

Replaced Product ID (OLD): 2CHH590146A6069

Material Compliance

RoHS Declaration:	2CHC663079X0201
RoHS Information:	Following EU Directive 2011/65/EU and Amendment 2015/863 July 22, 2019
REACH Declaration:	2CHC663998X0201
REACH Information:	False - does not contain substances > 0.1 mass percentage
REACH Date:	20251022
Conflict Minerals Reporting Template (CMRT):	9AKK108468A3363
WEEE Category:	5. Small Equipment (No External Dimension More Than 50 cm)
WEEE B2C / B2B:	Business To Business

Certificates and Declarations

Declaration of Conformity - CE:	2CHC663019X9901
EU Data Act Applicability and Compliance:	Not Applicable

External Classifications and Standards

ETIM 9:	EC001590 - Installation switch
ETIM 10:	EC001590 - Installation switch

Categories

Products > Low Voltage Products and Systems > Wiring Accessories - Light Switch Ranges > Flush Mounted Inserts > Electronic Inserts

