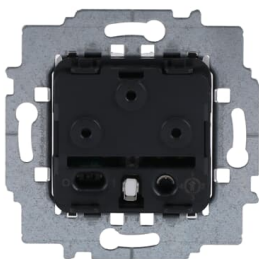




 PRODUCT-DETAILS

2025 RFID U

Card switch insert RFID with legend 110 ... 230 V



General Information

Extended Product Type:	2025 RFID U
Product ID:	2CKA001012A2242
EAN:	4011395285169
Catalog Description:	Card switch insert RFID with legend 110 ... 230 V
Long Description:	<p>Card recognition via RFID or mechanically selectable. Status display via LED and optical waveguide frame Two independent contacts. Contact one always on, if card is detected. 3 adjustable operating modes (standard / ECO / extended) with pre-configured run-on times for contact two and brightness of status LED. 13.56 MHz RFID standard ISO/IEC 14443 and ISO/IEC 15693.</p>
Display Name:	2025 RFID U

Installation

Instructions and Manuals:	2CKA000073B5264
Instructions and Manuals (Part 2):	9AKK108470A5869
Mounting Type:	Flush Mounted

Type of Fastening:	Mounting with Claw Mounting with Screw
Modular Components Included:	Flush Mounted Insert with Mounting Plate

Environmental

Ambient Air Temperature:	Operation -25 ... +45 °C
Degree of Protection:	IP20

Technical

Data Sheet, Technical Information:	No document needed
Number of Poles:	1P
Number of Outputs:	2
Terminal Type:	Screw Terminals
Authentication Method:	RFID

Electrical

Rated Voltage (U_r):	110 ... 230 V
Rated Current (I_n):	5.2 A
Rated Frequency (f):	50/60 Hz
Maximum Switching Power:	Fluorescent Lamp 700 V-A Halogen Low Voltage Lamps with Electronical Transformers (Capacitive Loads) 1000 V-A Halogen Low Voltage Lamps with Magnetic Transformers (Inductive Loads) 800 V-A Incandescent Lamp or Halogen High Voltage Lamps 1200 W LEDi 160 V-A
Load Type:	Universal and LED Retrofit LEDi/CFLi Incandescent Lamp Halogen Lamp, High Voltage Halogen Lamp, Low Voltage Fluorescent Lamp
Number of Contacts NO:	2

Design

Design Range:	Platform 63 Busch-art linear future linear Busch-axcent solo Pure Stainless Steel carat Busch-Dynasty
----------------------	--

Design Range Variant:	Busch-art linear Busch-art linear - with Decor Ring Busch-art linear - pur future future linear Busch-axcent Busch-axcent pur
Surface Finishing:	Untreated Matt
Material:	Thermoplastic
Color:	black

Dimensions

Product Net Width:	71 mm
Product Net Height:	71 mm
Product Net Depth / Length:	45.8 mm
Product Net Weight:	77 g
Built-In Depth (t₂):	32 mm

Engineering

Building Information Modeling – BIM:	9AKK108471A9963
---	-----------------

Material Compliance

RoHS Declaration:	2CKA200000E7680
RoHS Information:	Following EU Directive 2011/65/EU and Amendment 2015/863 July 22, 2019
REACH Declaration:	2CKA309999E9999
REACH Information:	False - does not contain substances > 0.1 mass percentage
REACH Date:	20260216
Conflict Minerals Reporting Template (CMRT):	9AKK108468A3363
WEEE Category:	5. Small Equipment (No External Dimension More Than 50 cm)
WEEE B2C / B2B:	Business To Consumer

Certificates and Declarations

Declaration of Conformity - CE:	2CKA200000E7680
EU Data Act Applicability and Compliance:	Not Applicable

External Classifications and Standards

ETIM 9:	EC001588 - Electronic switch
----------------	------------------------------

ETIM 10: EC001588 - Electronic switch

eClass: V11.0 : 27144054

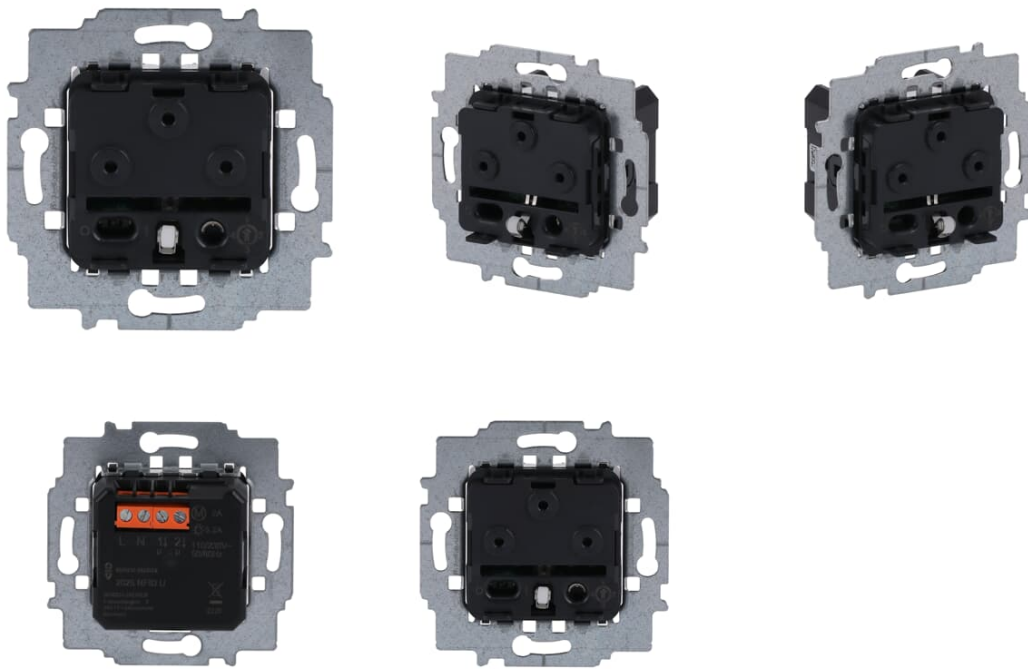
Accessories

Identifier	Description	Type	Qty	Unit Of Measure
2CKA001710A4127	Cover plate with legend Card, Symbol "arrows" for Card switch RFID Hotel card studio white - Platform 63	1792 RFID-84	1	piece
2CKA001710A4128	Cover plate with legend Card, Symbol "arrows" for Card switch RFID Hotel card aluminium silver - Platform 63	1792 RFID-83	1	piece
2CKA001710A4130	Cover plate with legend Card, Symbol "arrows" for Card switch RFID Hotel card anthracite - Platform 63	1792 RFID-81	1	piece
2CKA001710A4132	Cover plate with legend Card, Symbol "arrows" for Card switch RFID Hotel card ivory white - Platform 63	1792 RFID-82	1	piece
2CKA001710A4129	Cover plate with legend Card, Symbol "arrows" for Card switch RFID Hotel card studio white matt - Platform 63	1792 RFID-884	1	piece
2CKA001710A4131	Cover plate with legend Card, Symbol "arrows" for Card switch RFID Hotel card black matt - Platform 63	1792 RFID-885	1	piece
2CKA001710A4133	Cover plate with legend Card, Symbol "arrows" for Card switch RFID Hotel card grey metallic - Platform 63	1792 RFID-803	1	piece
2CKA001710A4134	Cover plate with legend Card, Symbol "arrows" for Card switch RFID Hotel card stainless steel - Pure Stainless Steel	1792 RFID-866	1	piece
2CKA001710A4244	Cover plate with legend Card, Symbol "arrows" for Card switch RFID Hotel card studio white - Busch-art linear	1792 RFID-44G	1	piece
2CKA001710A4245	Cover plate with legend Card, Symbol "arrows" for Card switch RFID Hotel card studio white matt - Busch-art linear	1792 RFID-44M	1	piece

2CKA001710A4247	Cover plate with legend Card, Symbol "arrows" for Card switch RFID Hotel card black matt - Busch-art linear	1792 RFID-45M	1	piece
2CSY259412R2041	2CSY259412R2041 TS/T 1 - Set of 10 Transponder Cards	TS/T 1	1	piece

Categories

Products > Low Voltage Products and Systems > Wiring Accessories - Light Switch Ranges > Flush Mounted Inserts > Electronic Inserts



360°