



---

PRODUCT-DETAILS

## 8573 AI

### Frame 3-gang StainlessSteel - Sky Niessen



---

#### General Information

<b>Extended Product Type:</b>	8573 AI
<b>Product ID:</b>	2CLA857300A1401
<b>EAN:</b>	8427238136301
<b>Catalog Description:</b>	Frame 3-gang StainlessSteel - Sky Niessen
<b>Long Description:</b>	Color: Stainless Steel Size (height x width): 86 x 228 mm Surface: anti-fingerprint stainless steel
<b>Display Name:</b>	8573 AI

---

#### Installation

<b>Instructions and Manuals:</b>	2CLX850009A1001
<b>Type of Fastening:</b>	Clamp
<b>Mounting Orientation:</b>	Horizontal Vertical

---

## Environmental

---

<b>Ambient Air Temperature:</b>	Operation -5 ... +35 °C Storage -5 ... +50 °C
<b>Degree of Protection:</b>	IP20

---



---

## Technical

---

<b>Data Sheet, Technical Information:</b>	9AKK107046A0356
<b>Accessories Available:</b>	Yes

---



---

## Design

---

<b>Design Range:</b>	Sky Niessen Sky Essence
<b>Surface Finishing:</b>	Metallic Glossy
<b>Material:</b>	Metal StainlessSteel
<b>Label Space Provided:</b>	Without Label Space
<b>Color:</b>	StainlessSteel
<b>Number of Gangs:</b>	3-gang

---



---

## Dimensions

---

<b>Product Net Width:</b>	228 mm
<b>Product Net Height:</b>	86 mm
<b>Product Net Depth / Length:</b>	8.5 mm
<b>Product Net Weight:</b>	0.164 kg

---



---

## Ordering

---

<b>Replaced Product ID (OLD):</b>	2CL0857304
-----------------------------------	------------

---



---

## ABB EcoSolutions

---

<b>ABB EcoSolutions:</b>	Yes
<b>EcoSolutions Profile:</b>	9AKK108472A1289

---



---

## Circular Value

---

**Recyclability Rate of the Product acc. to EN45555:** Design for Closing Resource Loops - Standard EN45555 - 94 %

---

**Sustainable Material Content in Product** Mechanically Recycled Polymer - 37.77 %  
(wt. %):

**Sustainable Material Content in Packaging** Recycled Cardboard - 91.66 %  
(wt. %):

**Environmental Product Declaration - EPD:** 9AKK108468A8662

## Material Compliance

<b>RoHS Declaration:</b>	2CLC857300A1401;2CLC00000004266
<b>RoHS Information:</b>	Following EU Directive 2011/65/EU and Amendment 2015/863 July 22, 2019
<b>REACH Declaration:</b>	2CLC00000009018
<b>REACH Information:</b>	False - does not contain substances > 0.1 mass percentage
<b>REACH Date:</b>	20251231
<b>Conflict Minerals Reporting Template (CMRT):</b>	9AKK108468A3363
<b>WEEE Category:</b>	Product Not in WEEE Scope

## Certificates and Declarations

**Declaration of Conformity - CE:** 9AKK106713A1744

**EU Data Act Applicability and Compliance:** Not Applicable

## Popular Downloads

**Marketing Video:** 9AKK106930A1594  
9AKK108468A9590

## External Classifications and Standards

<b>ETIM 9:</b>	EC000007 - Cover frame for domestic switching devices
<b>ETIM 10:</b>	EC000007 - Cover frame for domestic switching devices
<b>UNSPSC:</b>	39121704

## Accessories

Identifier	Description	Type	Qty	Unit Of Measure
ABB2CLA810100A1001	Insert Off switch 1-pole for 1 rocker, LED exchangeable/ 10 A	8101	1	piece
ABB2CLA850100A1401	Rocker Without imprint for Switch/push button, Single rocker Stainless steel - Sky Niessen	8501 AI	1	piece
ABB2CLA810200A1001	Insert Two-way switch for 8102 1 rocker, LED exchangeable/ 10 A		1	piece

ABB2CLA811000A1001	Insert Intermediate switch for 1 rocker, LED exchangeable/ 10 A	8110	1	piece
ABB2CLA810400A1001	Push button insert Single push button for 1 rocker, 1 NO 0 NC 1 CO 10 A	8104	1	piece
ABB2CLA850400A1401	Rocker Symbol "bell" for Switch/push button, Single rocker Stainless steel - Sky Niessen	8504 AI	1	piece
ABB2CLA811100A1001	Insert Series switch for 2 rocker, 10 A	8111	1	piece
ABB2CLA851100A1401	Rocker Without imprint for Switch/push button, Two-part rocker Stainless steel - Sky Niessen	8511 AI	1	piece
ABB2CLA812200A1001	Insert Alternating -/alternating switch for 2 rocker, 10 A	8122	1	piece
ABB2CLA818800A1001	Socket outlet Without imprint - Platform 8100	8188	1	piece
ABB2CLA858800A1401	Cover socket outlet Without imprint Stainless steel - Sky Niessen	8588 AI	1	piece
ABB2CLA811700A1001	Phone outlet For data connection housing Straight version 1gang	8117	1	piece
ABB2CLA851700A1401	Cover plate For data connection housing 1 gang StainlessSteel - Sky Niessen	8517 AI	1	piece
ABB2CLA815170A1001	TV/SAT outlet End socket	8151.7	1	piece
ABB2CLA855010A1401	Cover plate Sat 2 gang StainlessSteel - Sky Niessen	8550.1 AI	1	piece
ABB2CLA811900A1001	Buzzer - Platform 8100	8119	1	piece
ABB2CLA852900A1401	Cover plate Loudspeaker Stainless steel - Sky Niessen	8529 AI	1	piece
ABB2CLA060250A1001	Socket outlet 25 A White Various	-6025	1	piece
ABB2CLA850000A1401	Cover for Blind plate with Without imprint Stainless steel - Sky Niessen	8500 AI	1	piece
ABB2CLA810450A1001	Push button insert Single push button for 1 rocker, 1 NO 0 NC 1 CO 10 A	8104.5	1	piece
ABB2CLA850440A1401	Rocker Symbol "light" for Switch/push button, Single rocker Stainless steel - Sky Niessen	8504.4 AI	1	piece
ABB2CLA814410A1001	Blind switch 1-pole push button 10 A	8144.1	1	piece
ABB2CLA854400A1401	Rocker Symbol "arrows" for Venetian blind Two-part rocker Stainless steel - Sky Niessen	8544 AI	1	piece

ABB2CLA814400A1001	Push button insert 1-pole 8144 push button 10 A		1	piece
ABB2CLA201860A1001	Insert for Rj45 1 gang - Platform 8100	2018.6	1	piece
ABB2CLA851810A1401	Cover plate For data connection housing 1 gang StainlessSteel - Sky Niessen	8518.1 AI	1	piece
ABB2CLA851820A1401	Cover plate For data connection housing 2 gang StainlessSteel - Sky Niessen	8518.2 AI	1	piece
ABB2CLA856020A1401	Cover plate Without imprint for Dimmer Turn button Stainless steel - Sky Niessen	8560.2 AI	1	piece
ABB2CLA858500A1401	Cover USB charger StainlessSteel - Sky Niessen	8585 AI	1	piece

## Categories

Products > Low Voltage Products and Systems > Building and Home Automation Solutions > free@home > User Operation > Frames

Products > Low Voltage Products and Systems > Building and Home Automation Solutions > KNX > User Operation > Frames

Products > Low Voltage Products and Systems > Wiring Accessories - Light Switch Ranges > Frames

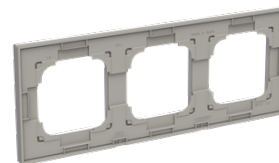
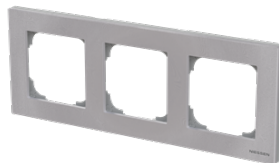


  
 ABB  
**Eco**  
 Solutions™