



PRODUCT-DETAILS

8572 AI**Frame 2-gang StainlessSteel - Sky Niessen****General Information**

Extended Product Type:	8572 AI
Product ID:	2CLA857200A1401
EAN:	8427238136264
Catalog Description:	Frame 2-gang StainlessSteel - Sky Niessen
Long Description:	Color: Stainless Steel Size (height x width): 86 x 157 mm Surface: anti-fingerprint stainless steel
Display Name:	8572 AI

Installation

Instructions and Manuals:	2CLX850009A1001
Type of Fastening:	Clamp
Mounting Orientation:	Horizontal Vertical

Environmental

Ambient Air Temperature:	Operation -5 ... +35 °C Storage -5 ... +50 °C
Degree of Protection:	IP20

Technical

Data Sheet, Technical Information:	9AKK107046A0356
Accessories Available:	Yes

Design

Design Range:	Sky Niessen Sky Essence
Surface Finishing:	Metallic Glossy
Material:	Metal StainlessSteel
Label Space Provided:	Without Label Space
Color:	StainlessSteel
Number of Gangs:	2-gang

Dimensions

Product Net Width:	157 mm
Product Net Height:	86 mm
Product Net Depth / Length:	8.5 mm
Product Net Weight:	0.114 kg

Ordering

Replaced Product ID (OLD):	2CL0857204
-----------------------------------	------------

ABB EcoSolutions

ABB EcoSolutions:	Yes
EcoSolutions Profile:	9AKK108472A1289

Circular Value

Recyclability Rate of the Product acc. to EN45555: Design for Closing Resource Loops - Standard EN45555 - 94 %

Sustainable Material Content in Product Mechanically Recycled Polymer - 37.77 %
(wt. %):

Sustainable Material Content in Packaging Recycled Cardboard - 91.66 %
(wt. %):

Environmental Product Declaration - EPD: 9AKK108468A8662

Material Compliance

RoHS Declaration:	2CLC857200A1401;2CLC00000004245
RoHS Information:	Following EU Directive 2011/65/EU and Amendment 2015/863 July 22, 2019
REACH Declaration:	2CLC00000008997
REACH Information:	False - does not contain substances > 0.1 mass percentage
REACH Date:	20251231
Conflict Minerals Reporting Template (CMRT):	9AKK108468A3363
WEEE Category:	Product Not in WEEE Scope

Certificates and Declarations

Declaration of Conformity - CE: 9AKK106713A1744

EU Data Act Applicability and Compliance: Not Applicable

Popular Downloads

Marketing Video: 9AKK106930A1594
9AKK108468A9590

External Classifications and Standards

ETIM 9:	EC000007 - Cover frame for domestic switching devices
ETIM 10:	EC000007 - Cover frame for domestic switching devices
UNSPSC:	39121704

Accessories

Identifier	Description	Type	Qty	Unit Of Measure
ABB2CLA810100A1001	Insert Off switch 1-pole for 1 rocker, LED exchangeable/ 10 A	8101	1	piece
ABB2CLA850100A1401	Rocker Without imprint for Switch/push button, Single rocker Stainless steel - Sky Niessen	8501 AI	1	piece
ABB2CLA810200A1001	Insert Two-way switch for 8102 1 rocker, LED exchangeable/ 10 A		1	piece

ABB2CLA811000A1001	Insert Intermediate switch for 1 rocker, LED exchangeable/ 10 A	8110	1	piece
ABB2CLA810400A1001	Push button insert Single push button for 1 rocker, 1 NO 0 NC 1 CO 10 A	8104	1	piece
ABB2CLA850400A1401	Rocker Symbol "bell" for Switch/push button, Single rocker Stainless steel - Sky Niessen	8504 AI	1	piece
ABB2CLA811100A1001	Insert Series switch for 2 rocker, 10 A	8111	1	piece
ABB2CLA851100A1401	Rocker Without imprint for Switch/push button, Two-part rocker Stainless steel - Sky Niessen	8511 AI	1	piece
ABB2CLA812200A1001	Insert Alternating -/alternating switch for 2 rocker, 10 A	8122	1	piece
ABB2CLA818800A1001	Socket outlet Without imprint - Platform 8100	8188	1	piece
ABB2CLA858800A1401	Cover socket outlet Without imprint Stainless steel - Sky Niessen	8588 AI	1	piece
ABB2CLA811700A1001	Phone outlet For data connection housing Straight version 1gang	8117	1	piece
ABB2CLA851700A1401	Cover plate For data connection housing 1 gang StainlessSteel - Sky Niessen	8517 AI	1	piece
ABB2CLA815170A1001	TV/SAT outlet End socket	8151.7	1	piece
ABB2CLA855010A1401	Cover plate Sat 2 gang StainlessSteel - Sky Niessen	8550.1 AI	1	piece
ABB2CLA811900A1001	Buzzer - Platform 8100	8119	1	piece
ABB2CLA852900A1401	Cover plate Loudspeaker Stainless steel - Sky Niessen	8529 AI	1	piece
ABB2CLA060250A1001	Socket outlet 25 A White Various	-6025	1	piece
ABB2CLA850000A1401	Cover for Blind plate with Without imprint Stainless steel - Sky Niessen	8500 AI	1	piece
ABB2CLA810450A1001	Push button insert Single push button for 1 rocker, 1 NO 0 NC 1 CO 10 A	8104.5	1	piece
ABB2CLA850440A1401	Rocker Symbol "light" for Switch/push button, Single rocker Stainless steel - Sky Niessen	8504.4 AI	1	piece
ABB2CLA814410A1001	Blind switch 1-pole push button 10 A	8144.1	1	piece
ABB2CLA854400A1401	Rocker Symbol "arrows" for Venetian blind Two-part rocker Stainless steel - Sky Niessen	8544 AI	1	piece

ABB2CLA814400A1001	Push button insert 1-pole 8144 push button 10 A		1	piece
ABB2CLA201860A1001	Insert for Rj45 1 gang - Platform 8100	2018.6	1	piece
ABB2CLA851810A1401	Cover plate For data connection housing 1 gang StainlessSteel - Sky Niessen	8518.1 AI	1	piece
ABB2CLA851820A1401	Cover plate For data connection housing 2 gang StainlessSteel - Sky Niessen	8518.2 AI	1	piece
ABB2CLA856020A1401	Cover plate Without imprint for Dimmer Turn button Stainless steel - Sky Niessen	8560.2 AI	1	piece
ABB2CLA858500A1401	Cover USB charger StainlessSteel - Sky Niessen	8585 AI	1	piece

Categories

Products > Low Voltage Products and Systems > Building and Home Automation Solutions > free@home > User Operation > Frames

Products > Low Voltage Products and Systems > Building and Home Automation Solutions > KNX > User Operation > Frames

Products > Low Voltage Products and Systems > Wiring Accessories - Light Switch Ranges > Frames

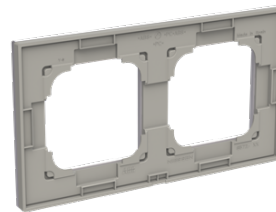
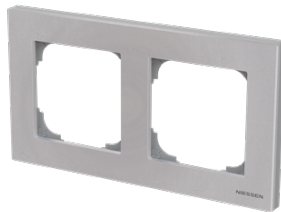



ABB
Eco
Solutions™