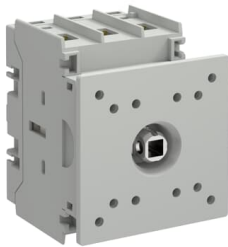




## PRODUCT-DETAILS

**OT63G2-3DS****OT63G2-3DS SWITCH DISCONNECTOR****General Information**

<b>Extended Product Type:</b>	OT63G2-3DS
<b>Product ID:</b>	1SCA162567R1001
<b>EAN:</b>	6417019926025
<b>Catalog Description:</b>	OT63G2-3DS SWITCH DISCONNECTOR
<b>Long Description:</b>	OT Plus Switch disconnecter series. 3-pole front operated door mounted switch disconnecter. The switch disconnecter has inbuilt screw terminals. Handle is not included.
<b>Display Name:</b>	OT63G2-3DS

**ABB EcoSolutions**

<b>ABB EcoSolutions:</b>	Yes
<b>End Of Life Disassembling Instructions:</b>	1SCC301147M0201
<b>Environmental Information:</b>	1SCC301333D0201
<b>Environmental Product Declaration - EPD:</b>	1SCC301333D0201

---

## Material Compliance

---

<b>Conflict Minerals Reporting Template (CMRT):</b>	9AKK108467A5658
<b>REACH Declaration:</b>	1SCC011021D0201
<b>RoHS Declaration:</b>	1SCC011020D0201
<b>RoHS Information:</b>	Following EU Directive 2011/65/EU and Amendment 2015/863 July 22, 2019
<b>Toxic Substances Control Act - TSCA:</b>	1SCC011025D0201

---

---

## Popular Downloads

---

<b>Data Sheet, Technical Information:</b>	9AKK108468A5537 1SCC301020C0201
<b>Instructions and Manuals:</b>	1SCC301134M0201
<b>Mechanical Drawings:</b>	OT63_100G2_3DS.stp

---

---

## Environmental

---

<b>Degree of Protection:</b>	Front IP20
<b>Pollution Degree:</b>	3

---

---

## Ordering

---

<b>Minimum Order Quantity:</b>	1 piece
<b>Customs Tariff Number:</b>	85363030
<b>Country of Origin:</b>	Finland

---

---

## Dimensions

---

<b>Product Net Width:</b>	64 mm
<b>Product Net Height:</b>	81 mm
<b>Product Net Depth / Length:</b>	70 mm
<b>Product Net Weight:</b>	0.267 kg

---

---

## Container Information

---

<b>Package Level 1 Units:</b>	box 1 piece
<b>Package Level 1 Width:</b>	70 mm
<b>Package Level 1 Depth / Length:</b>	87 mm
<b>Package Level 1 Height:</b>	74 mm
<b>Package Level 1 Gross Weight:</b>	0.302 kg
<b>Package Level 1 EAN:</b>	6417019926025
<b>Package Level 2 Units:</b>	carton 10 piece

---

Package Level 2 Width:	368 mm
Package Level 2 Depth / Length:	217 mm
Package Level 2 Height:	91 mm
Package Level 2 Gross Weight:	3.02 kg

## Technical

Color:	Grey
Connecting Capacity Main Circuit:	Flexible with Ferrule 1/2x Cu 1.5...4 mm <sup>2</sup> Solid 1/2x Cu 1.5...6 mm <sup>2</sup> Flexible 1x Cu 1.5...35 mm <sup>2</sup> Flexible 2x Cu 1.5...16 mm <sup>2</sup> Stranded 1x Cu 1.5...35 mm <sup>2</sup> Stranded 2x Cu 1.5...16 mm <sup>2</sup>
Conventional Free-air Thermal Current (I <sub>th</sub> 63 A):	
Conventional Thermal Current (I <sub>the</sub> ):	63 A
Handle Type:	Handle Not Included
Maximum Mounted Auxiliary Contacts:	4 NO, 4 NC
Mechanical Durability:	Nr. Operations 100000
Mounting Type:	Door mounting
Number of Poles:	3P
Operating Mode:	Front
Position of Line Terminals:	Top In - Bottom Out Bottom In - Top Out
Power Loss:	at Rated Operating Conditions per Pole 2.2 W
Rated Conditional Short-Circuit Current (I <sub>nc</sub> ):	(80 A fuse, 690 V) 50 kA
Rated Impulse Withstand Voltage (U <sub>imp</sub> ):	8 kV
Rated Insulation Voltage (U <sub>i</sub> ):	acc. to IEC 60947-1 800 V
Rated Operational Current AC-21A (I <sub>e</sub> ):	(415 V) 63 A (690 V) 63 A
Rated Operational Current AC-22A (I <sub>e</sub> ):	(415 V) 63 A (690 V) 63 A
Rated Operational Current AC-23A (I <sub>e</sub> ):	(415 V) 63 A (690 V) 32 A
Rated Operational Power AC-23A (P <sub>e</sub> ):	(415 V) 30 kW (690 V) 30 kW
Rated Operational Voltage:	Main Circuit 800 V
Rated Short-Circuit Making Capacity (I <sub>cm</sub> ):	(690 V) 3.5 kA
Rated Short-time Withstand Current Low Voltage (I <sub>cw</sub> ):	for 1 s 1.5 kA for 0.2 s 2.5 kA
Recommended Screw Driver:	Main Circuit Pozidriv 2
Special Functions:	No
Standards:	IEC60947-3 UL60947-4-1 CSA C22.2 No.14
Switches Operating Mechanism:	Mechanism on Top of the Switch

<b>Terminal Type:</b>	Screw Terminals
<b>Tightening Torque:</b>	acc. IEC 60947-1 2 N·m
<b>Wire Stripping Length:</b>	Main Circuit 13-16 mm Main Circuit 0.51-0.63 in

## Technical UL/CSA

<b>Maximum Operating Voltage UL/CSA:</b>	600 V
<b>Ampere Rating:</b>	63 A
<b>Horsepower Rating UL/CSA:</b>	(110 ... 120 V AC) Single Phase 2 Hp (240 V AC) Single Phase 7.5 Hp (440 ... 480 V AC) Single Phase 15 Hp (550 ... 600 V AC) Single Phase 15 Hp (110 ... 120 V AC) Three Phase 5 Hp (240 V AC) Three Phase 15 Hp (440 ... 480 V AC) Three Phase 30 Hp (550 ... 600 V AC) Three Phase 30 Hp
<b>Wire Size:</b>	1x 16-2 AWG 2x 16-8 AWG
<b>Tightening Torque UL/CSA:</b>	UL 18 lbf·in

## Certificates and Declarations

<b>CCC Certificate:</b>	CCC OT63-100G2
<b>Declaration of Conformity - CE:</b>	1SCC301329D2701
<b>DNV Certificate:</b>	1SCC301347D0201
<b>UL Certificate:</b>	cULus certificate OT_OTC63-100G2

## External Classifications and Standards

<b>Object Classification Code:</b>	Q
<b>ETIM 9:</b>	EC000216 - Switch disconnecter (low voltage)
<b>ETIM 10:</b>	EC000216 - Switch disconnecter (AC)
<b>UNSPSC:</b>	39122233
<b>IDEA Granular Category Code (IGCC):</b>	5290 >> Disconnect switch
<b>eClass:</b>	V11.1 : 27371403
<b>WEEE Category:</b>	5. Small Equipment (No External Dimension More Than 50 cm)
<b>E-Number (Finland):</b>	3642544
<b>E-Number (Norway):</b>	4384701
<b>E-Number (Sweden):</b>	3172132

## Categories

Products > Low Voltage Products and Systems > Switches > Switch Disconnectors

