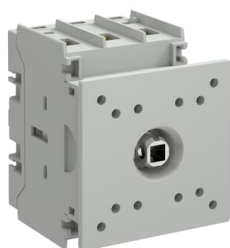




## PRODUCT-DETAILS

**OT100G2-3DS****OT100G2-3DS SWITCH DISCONNECTOR****General Information**

|                               |  |
|-------------------------------|--|
| <b>Extended Product Type:</b> | OT100G2-3DS  |
| <b>Product ID:</b>            | 1SCA162565R1001  |
| <b>EAN:</b>                   | 6417019926001  |
| <b>Catalog Description:</b>   | OT100G2-3DS SWITCH DISCONNECTOR  |
| <b>Long Description:</b>      | OT Plus Switch disconnecter series. 3-pole front operated door mounted switch disconnecter. The switch disconnecter has inbuilt screw terminals. Handle is not included. |
| <b>Display Name:</b>          | OT100G2-3DS  |

**ABB EcoSolutions**

|   |                 |
|---|-----------------|
| <b>ABB EcoSolutions:</b>                        | Yes             |
| <b>End Of Life Disassembling Instructions:</b>  | 1SCC301147M0201 |
| <b>Environmental Information:</b>               | 1SCC301333D0201 |
| <b>Environmental Product Declaration - EPD:</b> | 1SCC301333D0201 |

---

## Material Compliance

---

|   |  |
|---|--|
| <b>Conflict Minerals Reporting Template (CMRT):</b> | 9AKK108467A5658  |
| <b>REACH Declaration:</b>                           | 1SCC011021D0201  |
| <b>RoHS Declaration:</b>                            | 1SCC011020D0201  |
| <b>RoHS Information:</b>                            | Following EU Directive 2011/65/EU and Amendment 2015/863 July 22, 2019 |
| <b>Toxic Substances Control Act - TSCA:</b>         | 1SCC011025D0201  |

---

---

## Popular Downloads

---

|   |                                    |
|---|------------------------------------|
| <b>Data Sheet, Technical Information:</b> | 9AKK108468A5537<br>1SCC301020C0201 |
| <b>Instructions and Manuals:</b>          | 1SCC301134M0201                    |
| <b>Mechanical Drawings:</b>               | OT63_100G2_3DS.stp                 |

---

---

## Environmental

---

|                              |            |
|------------------------------|------------|
| <b>Degree of Protection:</b> | Front IP20 |
| <b>Pollution Degree:</b>     | 3          |

---

---

## Ordering

---

|                                |          |
|--------------------------------|----------|
| <b>Minimum Order Quantity:</b> | 1 piece  |
| <b>Customs Tariff Number:</b>  | 85363030 |
| <b>Country of Origin:</b>      | Finland  |

---

---

## Dimensions

---

|                                    |          |
|------------------------------------|----------|
| <b>Product Net Width:</b>          | 64 mm    |
| <b>Product Net Height:</b>         | 81 mm    |
| <b>Product Net Depth / Length:</b> | 70 mm    |
| <b>Product Net Weight:</b>         | 0.267 kg |

---

---

## Container Information

---

|  |                 |
|--|-----------------|
| <b>Package Level 1 Units:</b>          | box 1 piece     |
| <b>Package Level 1 Width:</b>          | 70 mm           |
| <b>Package Level 1 Depth / Length:</b> | 87 mm           |
| <b>Package Level 1 Height:</b>         | 74 mm           |
| <b>Package Level 1 Gross Weight:</b>   | 0.302 kg        |
| <b>Package Level 1 EAN:</b>            | 6417019926001   |
| <b>Package Level 2 Units:</b>          | carton 10 piece |

---

|                                 |         |
|---------------------------------|---------|
| Package Level 2 Width:          | 368 mm  |
| Package Level 2 Depth / Length: | 217 mm  |
| Package Level 2 Height:         | 91 mm   |
| Package Level 2 Gross Weight:   | 3.02 kg |

## Technical

|  |  |
|--|--|
| Color:   | Grey   |
| Connecting Capacity Main Circuit:                                  | Flexible with Ferrule 1/2x Cu 1.5...4 mm <sup>2</sup><br>Solid 1/2x Cu 1.5...6 mm <sup>2</sup><br>Flexible 1x Cu 1.5...35 mm <sup>2</sup><br>Flexible 2x Cu 1.5...16 mm <sup>2</sup><br>Stranded 1x Cu 1.5...35 mm <sup>2</sup><br>Stranded 2x Cu 1.5...16 mm <sup>2</sup> |
| Conventional Free-air Thermal Current (I <sub>th</sub> 100 A):     |  |
| Conventional Thermal Current (I <sub>the</sub> ):                  | 100 A  |
| Handle Type:   | Handle Not Included  |
| Maximum Mounted Auxiliary Contacts:                                | 4 NO, 4 NC   |
| Mechanical Durability:   | Nr. Operations 100000  |
| Mounting Type:   | Door mounting  |
| Number of Poles:   | 3P   |
| Operating Mode:  | Front  |
| Position of Line Terminals:  | Top In - Bottom Out<br>Bottom In - Top Out   |
| Power Loss:  | at Rated Operating Conditions per Pole 5.3 W   |
| Rated Conditional Short-Circuit Current (I <sub>nc</sub> ):        | (100 A fuse, ≤415 V) 5 kA<br>(80 A fuse, 690 V) 50 kA  |
| Rated Impulse Withstand Voltage (U <sub>imp</sub> ):               | 8 kV   |
| Rated Insulation Voltage (U <sub>i</sub> ):                        | acc. to IEC 60947-1 800 V  |
| Rated Operational Current AC-21A (I <sub>e</sub> ):                | (415 V) 100 A<br>(690 V) 80 A  |
| Rated Operational Current AC-22A (I <sub>e</sub> ):                | (415 V) 100 A<br>(690 V) 80 A  |
| Rated Operational Current AC-23A (I <sub>e</sub> ):                | (415 V) 80 A<br>(690 V) 40 A   |
| Rated Operational Power AC-23A (P <sub>e</sub> ):                  | (415 V) 45 kW<br>(690 V) 37 kW   |
| Rated Operational Voltage:   | Main Circuit 800 V   |
| Rated Short-Circuit Making Capacity (I <sub>cm</sub> ):            | (690 V) 3.5 kA   |
| Rated Short-time Withstand Current Low Voltage (I <sub>cw</sub> ): | for 1 s 1.5 kA<br>for 0.2 s 2.5 kA   |
| Recommended Screw Driver:  | Main Circuit Pozidriv 2  |
| Special Functions:   | No   |
| Standards:   | IEC60947-3<br>UL60947-4-1<br>CSA C22.2 No.14   |
| Switches Operating Mechanism:                                      | Mechanism on Top of the Switch   |

|                               |  |
|-------------------------------|--|
| <b>Terminal Type:</b>         | Screw Terminals                                    |
| <b>Tightening Torque:</b>     | acc. IEC 60947-1 2 N·m                             |
| <b>Wire Stripping Length:</b> | Main Circuit 13-16 mm<br>Main Circuit 0.51-0.63 in |

## Technical UL/CSA

|  |                            |
|--|----------------------------|
| <b>Maximum Operating Voltage UL/CSA:</b> | 600 V                      |
| <b>Wire Size:</b>                        | 1x 16-2 AWG<br>2x 16-8 AWG |
| <b>Tightening Torque UL/CSA:</b>         | UL 18 lbf·in               |

## Certificates and Declarations

|  |                                  |
|--|----------------------------------|
| <b>CCC Certificate:</b>                | CCC OT63-100G2                   |
| <b>Declaration of Conformity - CE:</b> | 1SCC301329D2701                  |
| <b>DNV Certificate:</b>                | 1SCC301347D0201                  |
| <b>UL Certificate:</b>                 | cULus certificate OT_OTC63-100G2 |

## External Classifications and Standards

|  |  |
|--|--|
| <b>Object Classification Code:</b>         | Q  |
| <b>ETIM 9:</b>                             | EC000216 - Switch disconnecter (low voltage)               |
| <b>ETIM 10:</b>                            | EC000216 - Switch disconnecter (AC)                        |
| <b>UNSPSC:</b>                             | 39122233   |
| <b>IDEA Granular Category Code (IGCC):</b> | 5290 >> Disconnect switch                                  |
| <b>eClass:</b>                             | V11.1 : 27371403   |
| <b>WEEE Category:</b>                      | 5. Small Equipment (No External Dimension More Than 50 cm) |
| <b>E-Number (Finland):</b>                 | 3642552  |
| <b>E-Number (Norway):</b>                  | 4384715  |
| <b>E-Number (Sweden):</b>                  | 3172108  |

## Categories

Products > Low Voltage Products and Systems > Switches > Switch Disconnectors

