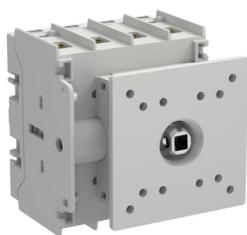




PRODUCT-DETAILS

OT63G2-4DSN2**OT63G2-4DSN2 SWITCH DISCONNECTOR****General Information**

Extended Product Type:	OT63G2-4DSN2
Product ID:	1SCA162568R1001
EAN:	6417019926032
Catalog Description:	OT63G2-4DSN2 SWITCH DISCONNECTOR
Long Description:	OT Plus Switch disconnecter series. 4-pole front operated door mounted switch disconnecter. The switch disconnecter has inbuilt screw terminals. Handle is not included.
Display Name:	OT63G2-4DSN2

ABB EcoSolutions

ABB EcoSolutions:	Yes
End Of Life Disassembling Instructions:	1SCC301147M0201
Environmental Information:	1SCC301333D0201
Environmental Product Declaration - EPD:	1SCC301333D0201

Material Compliance

Conflict Minerals Reporting Template (CMRT):	9AKK108467A5658
REACH Declaration:	1SCC011021D0201
RoHS Declaration:	1SCC011020D0201
RoHS Information:	Following EU Directive 2011/65/EU and Amendment 2015/863 July 22, 2019
Toxic Substances Control Act - TSCA:	1SCC011025D0201

Popular Downloads

Data Sheet, Technical Information:	9AKK108468A5537 1SCC301020C0201
Instructions and Manuals:	1SCC301134M0201
Mechanical Drawings:	OT63_100G2_4DSN2.stp

Environmental

Degree of Protection:	Front IP20
Pollution Degree:	3

Ordering

Minimum Order Quantity:	1 piece
Customs Tariff Number:	85363030
Country of Origin:	Finland

Dimensions

Product Net Width:	76 mm
Product Net Height:	81 mm
Product Net Depth / Length:	70 mm
Product Net Weight:	0.340 kg

Container Information

Package Level 1 Units:	box 1 piece
Package Level 1 Width:	82 mm
Package Level 1 Depth / Length:	87 mm
Package Level 1 Height:	74 mm
Package Level 1 Gross Weight:	0.388 kg
Package Level 1 EAN:	6417019926032
Package Level 2 Units:	carton 10 piece

Package Level 2 Width:	427 mm
Package Level 2 Depth / Length:	217 mm
Package Level 2 Height:	91 mm
Package Level 2 Gross Weight:	3.88 kg

Technical

Color:	Grey
Connecting Capacity Main Circuit:	Flexible with Ferrule 1/2x Cu 1.5...4 mm ² Solid 1/2x Cu 1.5...6 mm ² Flexible 1x Cu 1.5...35 mm ² Flexible 2x Cu 1.5...16 mm ² Stranded 1x Cu 1.5...35 mm ² Stranded 2x Cu 1.5...16 mm ²
Conventional Free-air Thermal Current (I_{th63A}):	
Conventional Thermal Current (I_{the}):	63 A
Fourth Pole Position:	Right Side
Fourth Pole Type:	Switched - Simultaneous Function Switched - Late-break and Early-make
Handle Type:	Handle Not Included
Maximum Mounted Auxiliary Contacts:	4 NO, 4 NC
Mechanical Durability:	Nr. Operations 100000
Mounting Type:	Door mounting
Number of Poles:	4P
Operating Mode:	Front
Position of Line Terminals:	Top In - Bottom Out Bottom In - Top Out
Power Loss:	at Rated Operating Conditions per Pole 2.2 W
Rated Conditional Short-Circuit Current (I_{nc}):	(80 A fuse, 690 V) 50 kA
Rated Impulse Withstand Voltage (U_{imp}):	8 kV
Rated Insulation Voltage (U_i):	acc. to IEC 60947-1 800 V
Rated Operational Current AC-21A (I_e):	(415 V) 63 A (690 V) 63 A
Rated Operational Current AC-22A (I_e):	(415 V) 63 A (690 V) 63 A
Rated Operational Current AC-23A (I_e):	(415 V) 63 A (690 V) 32 A
Rated Operational Power AC-23A (P_e):	(415 V) 30 kW (690 V) 30 kW
Rated Operational Voltage:	Main Circuit 800 V
Rated Short-Circuit Making Capacity (I_{cm}):	(690 V) 3.5 kA
Rated Short-time Withstand Current Low Voltage (I_{cw}):	for 1 s 1.5 kA for 0.2 s 2.5 kA
Recommended Screw Driver:	Main Circuit Pozidriv 2
Special Functions:	No

Standards:	IEC60947-3 UL60947-4-1 CSA C22.2 No.14
Switches Operating Mechanism:	Mechanism on Top of the Switch
Terminal Type:	Screw Terminals
Tightening Torque:	acc. IEC 60947-1 2 N·m
Wire Stripping Length:	Main Circuit 13-16 mm Main Circuit 0.51-0.63 in

Technical UL/CSA

Maximum Operating Voltage UL/CSA:	600 V
Ampere Rating:	63 A
Horsepower Rating UL/CSA:	(110 ... 120 V AC) Single Phase 2 Hp (240 V AC) Single Phase 7.5 Hp (440 ... 480 V AC) Single Phase 15 Hp (550 ... 600 V AC) Single Phase 15 Hp (110 ... 120 V AC) Three Phase 5 Hp (240 V AC) Three Phase 15 Hp (440 ... 480 V AC) Three Phase 30 Hp (550 ... 600 V AC) Three Phase 30 Hp
Wire Size:	1x 16-2 AWG 2x 16-8 AWG
Tightening Torque UL/CSA:	UL 18 lbf·in

Certificates and Declarations

CCC Certificate:	CCC OT63-100G2
Declaration of Conformity - CE:	1SCC301329D2701
DNV Certificate:	1SCC301347D0201
UL Certificate:	cULus certificate OT_OTC63-100G2

External Classifications and Standards

Object Classification Code:	Q
ETIM 9:	EC000216 - Switch disconnecter (low voltage)
ETIM 10:	EC000216 - Switch disconnecter (AC)
UNSPSC:	39122233
IDEA Granular Category Code (IGCC):	5290 >> Disconnect switch
eClass:	V11.1 : 27371403
WEEE Category:	5. Small Equipment (No External Dimension More Than 50 cm)
E-Number (Finland):	3642546
E-Number (Norway):	4384704
E-Number (Sweden):	3172124

Categories

Products > Low Voltage Products and Systems > Switches > Switch Disconnectors

