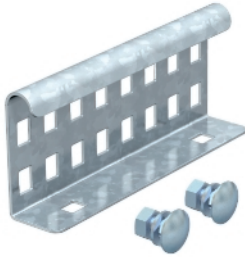


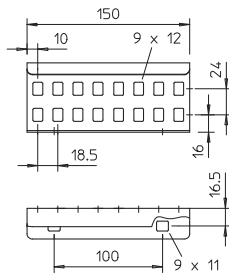
Straight connector FS



The bolt fastening ensures the continuity of the equipotential bonding.
Straight connector as external connector to connect cable ladders and fittings with a side height of 60 mm and continuous rail perforation.

Type	Side height mm	Pack. pcs	Weight kg/100 pcs.	Item No.
LVG 60 FS	60	10	22,000	6208840
LVG 60 FT	60	10	23,000	6208843
LVG 60 A2	60	10	22,000	6208846
LVG 60 A4	60	10	20,000	6208835

Dimensions



St Steel **V2A** Stainless steel, A2 **V4A** Stainless steel, A4
FS Strip-galvanised **FT** Hot-dip galvanised