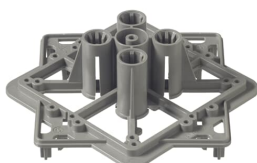


PRODUCT-DETAILS

AS101

AS101 Box support



General Information

| | |
|-----------------------|-------------------|
| Extended Product Type | AS101 |
| Product ID | 2TKA00004251 |
| EAN | 6438199008257 |
| Catalog Description | AS101 Box support |

Long Description

Box support AS101 is used at concrete element factories with casting tables when installing mounting or junction boxes into upper side of the element. The support is assembled from two AS101 plastic parts: the other is fixed to the casting table with threaded bushing magnet ("vemo magnet", for example D60/65 H10, M16) and the other is equipped with the box (compatible with most boxes in the market). The plastic parts are then connected to each other's with two rebars $\text{\O}10\text{mm}$ or $\text{\O}8\text{mm}$. The length of the rebars is dependent on the thickness of the element and the box used (separate chart for dimensioning). Made of 100% recycled plastic (post-consumer plastic waste) and halogen free material (IEC/61249-2-21).

Environmental

| | |
|-------------|-----------------------------------|
| RoHS Status | Following EU Directive 2011/65/EU |
|-------------|-----------------------------------|

Dimensions

| | |
|----------------------------|------------|
| Product Net Width | 0.1 m |
| Product Net Height | 0.049 m |
| Product Net Depth / Length | 0.1 m |
| Product Net Weight | 0.03666 kg |

Container Information

| | |
|--------------------------------|---------------|
| Package Level 1 Units | box 60 piece |
| Package Level 1 Width | 0.4 m |
| Package Level 1 Height | 0.26 m |
| Package Level 1 Depth / Length | 0.4 m |
| Package Level 1 Gross Weight | 3 kg |
| Package Level 1 EAN | 6438199008257 |

Ordering

| | |
|------------------------|--------------|
| Minimum Order Quantity | 60 piece |
| Customs Tariff Number | 39259080 |
| E-Number (Finland) | 1152301 |
| E-Number (Sweden) | 1420466 |
| Country of Origin | Finland (FI) |

Certificates and Declarations (Document Number)

| | |
|--------------------------------|-----------------------|
| Declaration of Conformity - CE | No declaration needed |
| Instructions and Manuals | 9AKK107991A6298 |
| RoHS Information | 9AKK106713A4634 |

Popular Downloads

| | |
|-----------------------------------|-----------------|
| Data Sheet, Technical Information | 9AKK107991A6298 |
| Instructions and Manuals | 9AKK107991A6298 |

Classifications

| | |
|---------------|--|
| ETIM 7 | EC002328 - Accessories for junction boxes/junction cases for mounting in the wall |
| ETIM 8 | EC002328 - Accessories/spare parts for junction boxes/cases for mounting in the wall |
| WEEE Category | Product Not in WEEE Scope |
| CN8 | 39259080 |

Categories

Low Voltage Products and Systems → Installation Materials → Flush Mounted Boxes → Accessories for Plastic Flush Mounted Boxes → Box Support

