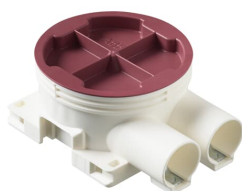


PRODUCT-DETAILS

AU6.2

AU6.2 Low mounting box, branch.2-way



General Information

Extended Product Type	AU6.2
Product ID	2TKA130032G1
EAN	6410011523155
Catalog Description	AU6.2 Low mounting box, branch.2-way
Long Description	The box has 2 branch inlets with locking devices for D20 conduits. A separate inlet can be attached to the side opposite the fixed inlets. The bottom of the box has two inlets. Inlets cannot be attached to the sides of the box, but the sides can be used to connect boxes with each other using a PMR474 interconnector cut level with the bottom of the box. The height of the box is 38 mm. Made of halogen free material (IEC/61249-2-21) and fulfills the requirements of the glow wire test according to the standard IEC/EN60670: 2005 (850 °C).

Technical

Application	None
Number of Poles	0
Number of Conduit Inlets	2
Number of Gangs	1
Number of Inlet Inserts Included	2
Design	Device connection box (round/square)
Cover Mounting Type	Snap On
Mounting Type	Flush mounted (plaster)
Switching Equipment Mounting Type	Screw

Shape	Round
Surface Finishing	Untreated
Material	Plastic
Includes	None
Model Number	Single
Color	White

Environmental

RoHS Status	Following EU Directive 2002/95/EC August 18, 2005 and amendment
-------------	---

Dimensions

Product Net Width	0.071 m
Product Net Height	0.038 m
Product Net Depth / Length	71 mm
Product Net Weight	0.0415 kg

Container Information

Package Level 1 Units	box 100 piece
Package Level 1 Width	0.4 m
Package Level 1 Height	0.26 m
Package Level 1 Depth / Length	0.4 m
Package Level 1 Gross Weight	4.535 kg
Package Level 1 EAN	6410011523155
Package Level 3 Units	pallet (lift) 2400 piece
Package Level 3 Width	1.2 m
Package Level 3 Height	1.1 m
Package Level 3 Depth / Length	0.8 m
Package Level 3 Gross Weight	108.84 kg

Ordering

Minimum Order Quantity	100 piece
Customs Tariff Number	39259080
E-Number (Finland)	1152315
E-Number (Sweden)	1420063
Country of Origin	Finland (FI)

Certificates and Declarations (Document Number)

Declaration of Conformity - CE	9AKK106713A4627
Instructions and Manuals	9AKK10103A2549
RoHS Information	9AKK106713A4634

Popular Downloads

Data Sheet, Technical Information

9AKK10103A2549

Instructions and Manuals

9AKK10103A2549

Classifications

ETIM 7	EC002601 - Box/housing for built-in mounting in the wall/ceiling
ETIM 8	EC002601 - Box/housing for built-in mounting in the wall/ceiling
WEEE Category	Product Not in WEEE Scope

Categories

Low Voltage Products and Systems → Installation Materials → Flush Mounted Boxes → Plastic Installation Boxes (for WA Inserts)
 → Hollow Wall

