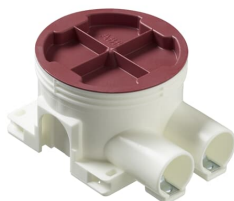


PRODUCT-DETAILS

AU5.2

AU5.2 Mounting box, branched 2-way



General Information

Extended Product Type	AU5.2
Product ID	2TKA130031G1
EAN	6410011523032
Catalog Description	AU5.2 Mounting box, branched 2-way
Long Description	The characteristics of this box are the same as the AU3.2; the difference is in the inlets. The box has 2 branch inlets for D20 conduits. There are also 3 knock-out on the side, and 2 on the bottom. Made of halogen free material (IEC/61249-2-21) and fulfills the requirements of the glow wire test according to the standard IEC/EN60670: 2005 (850 °C).

Technical

Application	None
Number of Poles	0
Number of Conduit Inlets	2
Number of Gangs	1
Number of Inlet Inserts Included	2
Design	Device connection box (round/square)
Cover Mounting Type	Snap On
Mounting Type	Flush mounted (plaster)
Switching Equipment Mounting Type	Screw
Shape	Round
Surface Finishing	Untreated
Material	Plastic
Includes	None
Model Number	Single

Color	White
-------	-------

Environmental

RoHS Status	Following EU Directive 2002/95/EC August 18, 2005 and amendment
-------------	---

Dimensions

Product Net Width	0.071 m
Product Net Height	0.047 m
Product Net Depth / Length	71 mm
Product Net Weight	0.0474 kg

Container Information

Package Level 1 Units	box 100 piece
Package Level 1 Width	0.4 m
Package Level 1 Height	0.26 m
Package Level 1 Depth / Length	0.4 m
Package Level 1 Gross Weight	5.22 kg
Package Level 1 EAN	6410011523032
Package Level 3 Units	pallet (lift) 2400 piece
Package Level 3 Width	1.2 m
Package Level 3 Height	1.1 m
Package Level 3 Depth / Length	0.8 m
Package Level 3 Gross Weight	125.28 kg

Ordering

Minimum Order Quantity	100 piece
Customs Tariff Number	39259080
E-Number (Finland)	1152303
E-Number (Sweden)	1422305
Country of Origin	Finland (FI)

Certificates and Declarations (Document Number)

Declaration of Conformity - CE	9AKK106713A4627
Instructions and Manuals	9AKK10103A2549
RoHS Information	9AKK106713A4634

Popular Downloads

Data Sheet, Technical Information	9AKK10103A2549
Instructions and Manuals	9AKK10103A2549

Classifications

ETIM 7	EC002601 - Box/housing for built-in mounting in the wall/ceiling
ETIM 8	EC002601 - Box/housing for built-in mounting in the wall/ceiling
WEEE Category	Product Not in WEEE Scope

Categories

Low Voltage Products and Systems → Installation Materials → Flush Mounted Boxes → Plastic Installation Boxes (for WA Inserts) → Concrete

