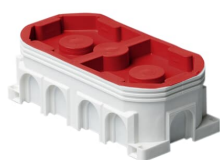


PRODUCT-DETAILS

# AU17.2

## AU17.2 Double mounting box



### General Information

|                       |  |
|-----------------------|--|
| Extended Product Type | AU17.2   |
| Product ID            | 2TKA130026G1   |
| EAN                   | 6410011523896  |
| Catalog Description   | AU17.2 Double mounting box   |
| Long Description      | The box AU17.2 has knock-outs for 11 inlets on the side, and 6 on the bottom. It can accommodate a device with a triple inlet. _x000D_ If necessary, the box may be divided in two by using partition plate PMR345. Made of halogen free material (IEC/61249-2-21) and fulfills the requirements of the glow wire test according to the standard IEC/EN60670: 2005 (850 °C). |

### Technical

|                                   |                                      |
|-----------------------------------|--------------------------------------|
| Application                       | None                                 |
| Number of Poles                   | 0                                    |
| Number of Conduit Inlets          | 0                                    |
| Number of Gangs                   | 1                                    |
| Number of Inlet Inserts Included  | 0                                    |
| Design                            | Device connection box (round/square) |
| Cover Mounting Type               | Snap On                              |
| Mounting Type                     | Flush mounted (plaster)              |
| Switching Equipment Mounting Type | Screw                                |
| Shape                             | Rectangular                          |

|                   |           |
|-------------------|-----------|
| Surface Finishing | Untreated |
| Material          | Plastic   |
| Includes          | None      |
| Model Number      | Double    |
| Color             | White     |

---

## Environmental

|             |   |
|-------------|---|
| RoHS Status | Following EU Directive 2002/95/EC August 18, 2005 and amendment |
|-------------|---|

---

## Dimensions

|                            |           |
|----------------------------|-----------|
| Product Net Width          | 71 mm     |
| Product Net Height         | 0.047 m   |
| Product Net Depth / Length | 142 mm    |
| Product Net Weight         | 0.0711 kg |
| Product Net Length         | 142 mm    |

---

## Container Information

|                                |                          |
|--------------------------------|--------------------------|
| Package Level 1 Units          | box 50 piece             |
| Package Level 1 Width          | 0.4 m                    |
| Package Level 1 Height         | 0.24 m                   |
| Package Level 1 Depth / Length | 0.4 m                    |
| Package Level 1 Gross Weight   | 4.035 kg                 |
| Package Level 1 EAN            | 6410011523896            |
| Package Level 3 Units          | pallet (lift) 1200 piece |
| Package Level 3 Width          | 1.2 m                    |
| Package Level 3 Height         | 1.1 m                    |
| Package Level 3 Depth / Length | 0.8 m                    |
| Package Level 3 Gross Weight   | 124.56 kg                |

---

## Ordering

|                        |              |
|------------------------|--------------|
| Minimum Order Quantity | 50 piece     |
| Customs Tariff Number  | 39259080     |
| E-Number (Finland)     | 1152389      |
| E-Number (Sweden)      | 1422308      |
| Country of Origin      | Finland (FI) |

---

## Certificates and Declarations (Document Number)

|                                |                 |
|--------------------------------|-----------------|
| Declaration of Conformity - CE | 9AKK106713A4627 |
| Instructions and Manuals       | 9AKK10103A2549  |
| RoHS Information               | 9AKK106713A4634 |

---

## Popular Downloads

---

Data Sheet, Technical Information

9AKK10103A2549

Instructions and Manuals

9AKK10103A2549

---

### Classifications

|               |  |
|---------------|--|
| ETIM 7        | EC002601 - Box/housing for built-in mounting in the wall/ceiling |
| ETIM 8        | EC002601 - Box/housing for built-in mounting in the wall/ceiling |
| WEEE Category | Product Not in WEEE Scope  |

---

### Categories

Low Voltage Products and Systems → Installation Materials → Flush Mounted Boxes → Plastic Installation Boxes (for WA Inserts) → Hollow Wall

