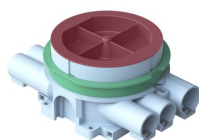


PRODUCT-DETAILS

# AU67

## AU67 Mounting box



### General Information

Extended Product Type	AU67
Product ID	2TKA001746G1
EAN	6418677332340
Catalog Description	AU67 Mounting box

#### Long Description

The mounting box has a rotating ring for adjusting the screw holes for device installation in optimal angle and screw distance is c/c 67mm. The green adapter ring, delivered with the box, is used in single-board walls (12-13 mm). The ring is removed when the wall thickness is two boards (24-26 mm). There are five fixed inlets for 16 mm conduits, three are open, and two fixed inlets for 20 mm conduits. All inlets are equipped with a locking device in metal for reliable connection between the conduits (flexi or stiff pipe) and the box. In addition, there are two openable holes on the sides and two in the bottom for different inlets. \_x000D\_ \_x000D\_ Manufactured from halogen free material (IEC/61249-2-21), the box complies with the IEC/EN60670:2005 glow wire test (850 °C).

### Technical

Application	None
Number of Poles	0
Number of Conduit Inlets	7
Number of Gangs	1
Number of Inlet Inserts Included	7
Design	Device connection box (round/square)
Cover Mounting Type	Snap On
Mounting Type	Flush mounted (plaster)
Switching Equipment Mounting Type	Screw
Shape	Round

Surface Finishing	Untreated
Material	Plastic
Includes	None
Cover Style	Construction Protective Cover
Model Number	Single
Color	Blue

---

## Environmental

Degree of Protection	IP3X
RoHS Status	Following EU Directive 2002/95/EC August 18, 2005 and amendment

---

## Dimensions

Product Net Width	0.13 m
Product Net Height	0.057 m
Product Net Depth / Length	90 mm
Product Net Weight	0.1226 kg
Product Net Length	130 mm

---

## Container Information

Package Level 1 Units	box 40 piece
Package Level 1 Width	0.4 m
Package Level 1 Height	0.26 m
Package Level 1 Depth / Length	0.4 m
Package Level 1 Gross Weight	5.1 kg
Package Level 1 EAN	6418677332340
Package Level 3 Units	pallet (lift) 960 piece
Package Level 3 Width	1.2 m
Package Level 3 Height	1.1 m
Package Level 3 Depth / Length	0.8 m
Package Level 3 Gross Weight	122.4 kg

---

## Ordering

Minimum Order Quantity	40 piece
Customs Tariff Number	39259080
E-Number (Sweden)	1422040
Country of Origin	Finland (FI)

---

## Certificates and Declarations (Document Number)

Declaration of Conformity - CE	9AKK106713A4627
Instructions and Manuals	9AKK10103A2549
RoHS Information	9AKK106713A4634

---

## Popular Downloads

Data Sheet, Technical Information	9AKK10103A2549
Instructions and Manuals	9AKK10103A2549

---

## Classifications

---

ETIM 7	EC002601 - Box/housing for built-in mounting in the wall/ceiling
ETIM 8	EC002601 - Box/housing for built-in mounting in the wall/ceiling
WEEE Category	Product Not in WEEE Scope

---

---

## Categories

---

Low Voltage Products and Systems → Installation Materials → Flush Mounted Boxes → Plastic Junction Boxes → Hollow Wall

