

sofamel

Product Technical Specifications

Mod. ACM

Insulated male bullet terminal

Functionality

These pre-insulated bullet terminals are used where a plug-in connection is required. They consist of an insulated tubular input for wiring and a plug-in connector.



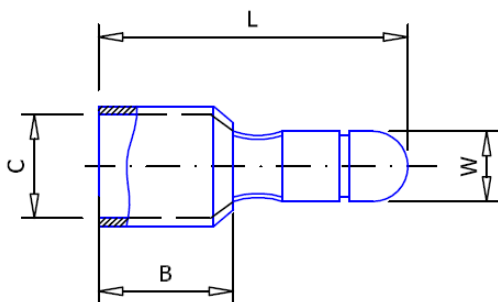
Product Features

ACM pre-insulated terminals are made of electrolytic copper strapping and PVC insulation. They incorporate an inner bushing that provides greater safety to withstand possible mechanical vibrations.

Heat resistance is -10 to 75°C.

Operating continuous temperature: 90 °C.

Dimensions



ACM-1,5	1,5	4,0	21,0	10,0	1,7
ACM-2,5	2,5				2,3
REFERENCIA	SECCION mm2	W	L	B	C



Mod. ACM

Insulated male bullet terminal

Raw material Characteristics

Conductor: **H62 / C28000 brass strip**

Copper sleeve: **T2 / C11000 copper tubular**

Insulation: **PVC**, halogen free

Finish: **Tinned**

Electrical characteristics

The maximum intensity depends on the section of the cable used,
if it is ventilated it will hold more current.

With the ACM terminal:

Section 1.5 mm² and cable of 1.5 mm² can hold between 13 and 15,5A.

Section 2.5 mm² and cable 2.5 mm² can hold between 18 and 21A.

Certified

And according to the **UNE 21021** standard: Connection parts for power lines up to 72.5 kV.

They comply with European Union Directive **2015/863 / EU (RoHS 3)**.

UL 486.